



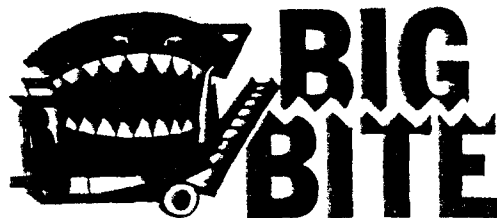
DURATECH

HAYBUSTER

BIG BALE BUSTER 2 POINT HOOKUP OPERATORS MANUAL & PARTS BOOK

Ser. No. 101-4277

256 2-PT



WARRANTY

Haybuster Mfg. Inc., warrants to the original purchaser for one year from purchase date that this product will be free from defects in material and workmanship when used as intended and under normal maintenance and operating conditions. This warranty is limited to the replacement of any defective part or parts returned to our factory in Jamestown, N.D., within thirty (30) days of failure.

This warranty shall become void if in Haybuster Mfg. Inc.'s., judgment the machine has been subject to misuse, negligence, alterations, damaged by accident or lack of required normal maintenance, or if the product has been used for a purpose for which it was not designed.

All claims for warranty must be made through the dealer which originally sold the product and all warranty adjustments must be made through same.

This warranty does not apply to tires or bearings or any other trade accessories not manufactured by Haybuster Mfg. Inc. Buyer must rely solely on the existing warranty, if any, of these respective manufacturers.

Haybuster Mfg. Inc., shall **not** be held liable for damages of any kind, direct, contingent, or consequential to property under this warranty. Haybuster Mfg. Inc., cannot be held liable for any damages resulting from causes beyond its control. Haybuster Mfg. Inc., shall **not** be held liable under this warranty for loss of crops, or rental costs or any expense or loss for labor or supplies.

Haybuster Mfg. Inc., reserves the right to make changes in materials and/or designs of this product at any time without notice.

This warranty is void if Haybuster Mfg. Inc., does not receive a valid warranty registration card at its office in Jamestown, N.D., within 10 days from date of original purchase.

All other warranties made with respect to this product, either expressed or implied, are hereby disclaimed by Haybuster Mfg. Inc.

**256 BALE BUSTER
DELIVERY AND SERVICE REPORT**

INSTRUCTIONS: Before delivering the machine, check the following items carefully and make corrections when necessary. Place an "X" in the blank after each item has been checked and found to be acceptable.

- _____ Check machine for shortage or damage in transit
- _____ Check for loose bolts or set screws
- _____ Check all hydraulic components for leaks or damage
- _____ Check lug bolts for tightness
- _____ Check tires for proper air pressure
- _____ Check condition of tire rims
- _____ Check machine for proper lubrication
- _____ Check all chains for proper adjustment
- _____ Check all belts for proper adjustment (bunk feeder attachment)
- _____ Check all shields for installation and condition
- _____ Check condition of all decals
- _____ Check all phases of operation

For assembly see pages 16-17 and 24-25

256 - 2 POINT SHIPPING LIST

1.	8100138	1	Adjustable Hitch, Right Hand
2.	8100139	1	Adjustable Hitch, Left Hand
3.	8100137	1	Adjustable Hitch, Brace
4.	4800086	2	Link Pin, 1-1/8"
5.		1	PTO Shaft Comp.
6.	8100070	1	PTO Shield
7.	5000025	2	1-1/8" Lock Washer
8.	4900024	2	1-1/8" Hex Nut Fine Thread
9.	4800140	2	1"x3" Bolt
10.	5000029	2	1" Lock Washer
11.	4900031	2	1" Nut
12.	4800115	2	3/4"x2-1/2" Bolt
13.	5000012	2	3/4" Lock Washer
14.	5000005	2	3/4" Flat Washer
15.	4900004	2	3/4" Nut
16.	4800010	4	5/8"x2" Bolt
17.	5000003	4	5/8" Lock Washer
18.	4900005	4	5/8" Hex Nut
19.	5000002	4	5/8" Flat Washer
20.		1	Operation & Parts Manual
21.	4800003	3	3/8" x 1" Bolt
22.	5000001	6	3/8" Flat Washer
23.	5000019	3	3/8" Lock Washer
24.	4900002	3	3/8" Nut

SAFETY INSTRUCTIONS

The safety of the operator is of great importance to Haybuster Manufacturing Company. We have provided decals, shields and other safety features to aid you in using your machine safely. In addition, we ask you to be a careful operator who will properly use and service your Haybuster equipment.

WARNING: BEFORE ATTEMPTING TO OPERATE THIS MACHINE, CAREFULLY READ ALL INSTRUCTIONS CONTAINED WITHIN THIS MANUAL. ALSO THE INSTRUCTION MANUAL PROVIDED WITH YOUR TRACTOR.

BEFORE OPERATING

1. Read and follow all instructions contained in:
 - a. this 256 Bale Buster operator's manual
 - b. tractor operator's manual
 - c. decals placed on the Bale Buster.

NOTE: Additional copies of the above mentioned materials can be obtained from your dealer.

2. Allow only responsible, properly instructed individuals to operate your machine. Carefully supervise inexperienced operators.
3. Use a tractor which meets the tractor requirements contained within this manual. Additional weights may be necessary.
4. Make sure the machine is in good operating condition and that all protective shields are in place and in proper working order. Replace damaged shields before operating.
5. Be sure all bystanders and other workers are clear before starting tractor and bale buster.
6. Make no modifications to the machine unless specifically recommended or requested by Haybuster Manufacturing Company.
7. Check periodically for breaks or unusual wear and make any necessary repairs.
8. Be sure the unit is securely attached to a tractor of equal or greater weight than the bale buster and bale.

DURING OPERATION

1. Enforce the following safety precautions and others contained in this manual to prevent serious personal injury or death due to accidental contact with rotating flails.

- a. Everyone must be kept clear of work area except operator seated at tractor controls.
 - b. Never work on or near bale buster unless engine is shut off and flails stopped.
 - c. Disengage PTO and make sure everyone is clear of machine before starting engine.
2. Enforce the following safety precautions and others contained in this manual to prevent injury due to accidental contact with flying material thrown by flails.
 - a. Keep bystanders away from work area.
 - b. Keep shields in place and in good condition.
 - c. Watch out for and avoid any object that might interfere with the proper operation of the machine.
 - d. Replace missing or damaged flails.
 3. Power takeoff shafts must be locked in place with protective PTO shields in place.
 4. Keep hands, feet and clothing away from power driven parts.
 5. Never leave tractor controls unattended while the engine is running.
 6. Never allow riders on the machine at any time.
 7. Be sure the tractor operator is the only person riding on the tractor.
 8. Exercise extreme care when operating on rough and/or steep terrain. Avoid operation on terrain which is excessively rough or steep.
 9. Make sure your tractor PTO speed never exceeds 1000 rpm.

SAFETY INSTRUCTIONS

DURING SERVICE & MAINTENANCE

1. Before working on or near the bale buster for any reason, including servicing, cleaning, unplugging or inspecting machine, use normal shut-down procedures unless instructed differently in this manual.
2. Check periodically and tighten any loose bolts or connections.
3. Use only replacement parts that are recommended by Haybuster Manufacturing Company.
4. If it is necessary to operate the tractor engine indoors for more than a few seconds, be sure to provide enough ventilation to remove the tractor exhaust fumes.
5. Hydraulic fluid escaping under pressure can be invisible and have enough force to penetrate the skin. When searching for a suspected leak, use a piece of wood or cardboard rather than your hands. If injured, seek medical attention immediately to prevent serious infection or reaction.
6. Relieve all pressure in the hydraulic system before disconnecting the hose or performing other work on the system. Make sure all connections are tight and the hose is in good condition before applying pressure to the system.

DURING TRANSPORT

1. Use good judgment and drive slowly over rough or uneven terrain.
2. Be sure tractor brakes are properly adjusted and foot pedals locked together.
3. Check your state laws regarding the use of lights, slow moving vehicle signs, safety chain and other possible requirements. During transport, it is recommended that the forks be pivoted over the tub and the deflector pivoted into the tub to insure 8' towing width.

SAFETY INSTRUCTIONS

WARNING: FAILURE TO COMPLY WITH THE ABOVE SAFETY INSTRUCTIONS OR THOSE THAT FOLLOW WITHIN THIS MANUAL COULD RESULT IN SEVERE PERSONAL INJURY OR DEATH.

THIS MACHINE IS NOT TO BE USED FOR ANY PURPOSE OTHER THAN THAT FOR WHICH IT IS INTENDED AS EXPLAINED IN THE OPERATOR'S MANUAL, ADVERTISING LITERATURE OR OTHER HAYBUSTER WRITTEN MATERIAL PERTAINING TO THE 256 BALE BUSTER.

SAFETY DECALS

The safety decals located on your machine contain important and useful information that will help you operate your equipment safely. Each of these safety decals are shown on pages 40 and 41.

To assure that all decals remain in place and in good condition, follow the instructions below:

1. Keep decals clean. Use soap and water - not mineral spirits, adhesive cleaners and other similar cleaners that will damage the decal.
2. Replace all damaged or missing decals. When attaching decals, surface temperature of the machine must be at least 40°F (5°C). The surface must also be clean and dry.
3. When replacing a machine component to which a decal is attached, be sure to also replace the decal.
4. Replacement decals can be purchased from your Haybuster dealer.

HAYBUSTER BIG BALE BUSTER SPECIFICATIONS

Tractor H.P. Required	See BEFORE OPERATING (Page 4) Min. 50 H.P.
Capacity	5-1/2 Ft. Long x 6-1/2 Ft. Dia., 1500 Lbs.
Optional Equipment	Quick Attach Bracket Universal Axle Mounting Brackets Bunk Conveyor Attachment
Gear Box	540-1000 R.P.M. w/Mounting Extensions
Rotor Length	72"
Rotor Diameter	25-1/2"
Rotor Bearings - Ball	1-3/4"
Knives - Heat-Treated	26
Caster Wheel - Taper Roller Bearings - Tire Size	760 x 15 6-Ply
Working Position:	
Length	144"
Width	128"
Transport Position:	
Length	144"
With Caster Wheel Removed	126"
Width	84"
Height	66"
Weight	2,500 Lbs.
2 Point Hookup	
P.T.O.	1000 R.P.M.
Dual Hydraulics (single hydraulic system optional)	1800 psi
Cylinder 3-1/2" x 16" Double Acting	

TABLE OF CONTENTS 1

Introduction	2
Operating Instructions.....	3-5
Transportation & Storage	6
Lubrication.....	7
Maintenance and Adjustments	8-9
Trouble Shooting	10
Hinge Frame Assembly #1, Ser. No. 101 to 950.....	12-13
Hinge Frame Assembly #2, Ser. No. 101 to 950.....	14-15
Hinge Frame Assembly #2, Ser. No. 951 thru 2349	16-17
Hinge Frame Assembly #1, Ser. No. 4058 thru	18-19
Hinge Frame Assembly #1, Ser. No. 951 thru 4057	20-21
Main Frame & Swivel Wheel Assembly, Ser. No. 101 to 950.....	22-23
Main Frame & Swivel Wheel Assembly, Ser. No. 951 to 1150.....	24-25
Main Frame & Swivel Wheel Assembly, Ser. No. 1151 thru	26-27
Bale Conveyor Assembly, Ser. No. 101 to 950	28-29
Bale Conveyor Assembly, Ser. No. 951 thru 2349	30-31
Bale Conveyor Assembly, Ser. No. 2350 thru 4057	32-33
Bale Conveyor Assembly, Ser. No. 4058 thru	34-35
Rack and Deflector Assembly, Ser. No. 101 thru 1496.....	36
Rack and Deflector Assembly, Ser. No. 1497 to 2449	37
Spring Loaded Deflector Adjustment	38-39
Rack and Deflector Assembly, Ser. No. 4058 thru.....	40-41
Tines and Tine Frame Assembly, Ser. No. 101 to 950.....	42
Tines and Tine Frame Assembly, Ser. No. 951 thru 3597.....	43
Tines and Tine Frame Assembly, Ser. No. 3598 thru.....	44
Hydraulics Parts List, Ser. No. 101 thru	45
P.T.O. Assembly Parts List, Ser. No. 101 to 950	46
P.T.O. Assembly Parts List, Ser. No. 951 thru	47
P.T.O. Assembly Parts List, Ser. No. 3566 thru	48
P.T.O. Assembly Partt List, Ser. No. 4058 thru	49
Flow Control Valve, Ser. No. 101 thru	50
Hydraulic Cylinder, Ser. No. 101 thru	51
Orbit Motor, Ser. No. 101 thru	52
Bale Buster Quik Tatch, Ser. No. 1151.....	54-55
Bale Buster Decal Requirements	56-57

2 INTRODUCTION

Your Model 256 BIG BALE BUSTER is designed to load and shred all types of forage including round bales up to 1,500 pounds or 66 inches in length and approximately 78 inches in diameter.

The BALE BUSTER has multiple uses:

1. Laying windrows in open fields.
2. Filling feed bunks - fenceline, circular, etc.
3. Spreading forage for livestock bedding.
4. Spreading mulch over perennial plants, such as strawberries, mushrooms, etc.
5. Spreading mulch over reclaimed land areas.

The purpose of this owner's manual is to explain maintenance requirements and routine adjustments for the most efficient operation of your BALE BUSTER. There is also a trouble shooting section which may help in case of any problems in the field. Any information not covered in this manual may be obtained from your dealer or the factory.

When reference is made as to front, rear, right hand or left hand of machine, the reference is always made from viewing the rear end of machine.

Always use serial number and model number when referring to parts or problems.

Model _____ Serial No. _____

NORMAL SHUT-DOWN PROCEDURE

For your safety and the safety of others, you must use the following normal shut-down procedure before leaving the tractor controls unattended for any reason, including servicing, cleaning, or inspecting the bale buster. A variation of the following procedure may be used if so instructed within this manual or your tractor manual or if an extreme emergency requires it.

- a. Disengage PTO.
 - b. Lower machine to ground level.
 - c. Place transmission in park or set park brake.
 - d. Shut off engine and remove key.
3. Wait for all movement to stop.

PRE-STARTING INSPECTION INSTRUCTIONS

To insure long life and economical operation, we highly recommend the operator of the bale buster be thoroughly instructed in the maintenance and operation of the machine. There is no substitute for a sound preventative maintenance program and a well trained operator.

Prior to starting the engine of the tractor, we recommend the operator make a visual inspection of the unit. This can be done as the lubrication is being carried out. Any items that are worn, broken, missing or needing adjustment must be serviced accordingly before operating the bale buster.

WARNING: Before inspecting the machine, use the normal shut-down procedure on this page.

Check the following:

1. Hydraulic components for leaks or damage.

WARNING: Hydraulic fluid escaping under pressure can be almost invisible and can have sufficient force to penetrate the skin. When searching for suspected leaks, use a piece of wood or cardboard rather than your hands. If injured, seek medical attention immediately to prevent serious infection or reaction.

2. Lug nuts for tightness.

3. Condition of tire rims.
4. Tires for proper air pressure.
5. Installation and condition of flails, and attachment bolts.
6. Rotor for twine build-up.
7. Chains and belts for proper tension, and condition.
9. Installation and condition of shields.
10. Installation of slow moving vehicle (SMV) sign if required.
11. Condition of decals.

TRACTOR SPECIFICATIONS

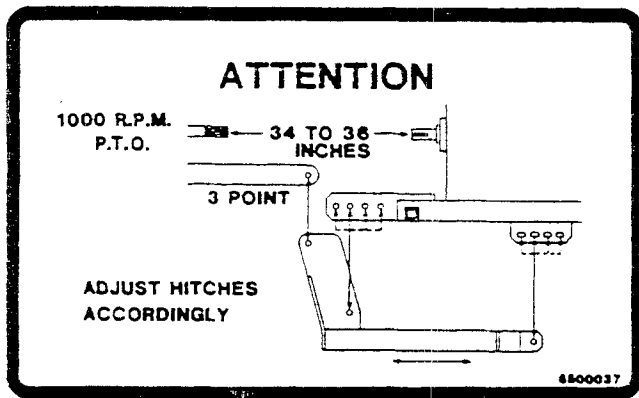
WARNING: Do not operate the bale buster unless the tractor complies with the following requirements:

1. Horsepower - 60 H.P. minimum.
 2. Rollover protective structure and seat-belts.
 3. Hydraulic system - 8 gallons per minute minimum, 1500 psi minimum two-way valves.
 4. Two sets of two-way hydraulic outlets.
 5. The tractor must be of equal or greater weight than the bale buster and bale to assure adequate braking and steering control.
 6. Counterbalance weight - It may be necessary to add weight to the front end of your tractor to maintain adequate tractor stability and control. At least 20% of the total weight must remain on the front axle.
-

4 OPERATING INSTRUCTIONS

MOUNTING INSTRUCTIONS - 3-POINT HITCH MOUNT

1. Attach bale buster to the lower lift arms of the three-point hitch.
2. Measure the distance between the end of the PTO shaft and the end of the rotor shaft. The distance should be 34-36 inches.



NOTE: If distance is not 34-36 inches, follow steps 3-5.

3. Detach the tractor from the bale buster.
4. Reinstall the adjustable hitches in any of the four holes on the main frame so that the 34 to 36 inch measurement will be obtained when the tractor is attached.
5. Reattach the tractor to the bale buster.
6. Attach the PTO shaft to the tractor PTO shaft. Depress the button on the coupling and slide the coupling onto the splined shaft. Make sure the spring loaded safety catch is properly seated.
7. Connect the two hydraulic hoses from the hydraulic cylinder to one set of hydraulic couplers on the tractor.
8. Connect the two hydraulic hoses from the bale conveyor speed control valve to the second set of hydraulic couplers on the tractor.
9. Raise the three point hitch until the bale buster frame is level. Lock the hitch control lever in that position.

NOTE: The use of stabilizers or sway bars is recommended to prevent sideways movement of the machine.

WARNING: Improper hitch adjustment may cause separation of P.T.O., driveline when loading bale or operating over uneven terrain. Separation may also occur if three point links are lifted excessively high.

IMPORTANT: When using smaller tractors in the CATEGORY III class, be certain three point rating is at least 4000 lbs.

STARTING MACHINE

WARNING: After making all necessary hookups to tractor, be sure rotor chamber is clear of any solid objects. Make sure any bystanders are away from discharge before engaging PTO. Flying objects can cause serious injury or even death.

BALE CONVEYOR SPEED

Bale conveyor speed is set with the bale conveyor speed control valve.

To chop the forage finer, decrease the conveyor speed by rotating the control lever up and to the left. For a coarser cut, increase the conveyor speed by rotating the lever to the right and down.

DEFLECTOR

The deflector assembly can be adjusted for different scattering effects. Raise the deflector for a wider spread. Lower the deflector for a narrower windrow. When bunk feeding an (8300420 optional) 18" wide deflector belt can be added to prevent material from blowing past the bunk.

STRIPPER PLATES

The bale buster comes with one stripper plate standard. For a finer cut, one or two more stripper plates can be added. Space the added stripper plates 4" apart and drill five 17/32" holes for each plate using the plate as a guide. Install the plate with five 1/2" x 1-1/2" bolts, flat washers, lock washers, and nuts.

In applications such as land reclamation, where a very coarse cut is desired, the stripper plate may be removed.

SLUG BARS

The Bale Buster comes standard with four slug bars. Up to seven slug bars can be installed. Increasing the number of slug bars helps hold the base away from the rotor, particularly when shredding wet, tough bales.

The slug bars can also be adjusted to expose more or less of the flail knives to the bale. This is accomplished by adding and subtracting flat washers, from either end of each bar.

Operating tractor at maximum RPM allows machine to do a better job of chopping forage

and also keeps a minimum of twine buildup on rotor. Twine buildup should be kept to a minimum to reduce fire hazard.

Basic machine is equipped with two (2) stands for storage. Make sure base of stands are setting firmly before unhooking from tractor mounts. If machine is equipped with bunk feeder attachment, make sure feeder stand is in position before unhooking from tractor. **CAUTION: Serious injury could result if machine is allowed to tip.**

Always operate slat conveyor to rotate bale in direction indicated by arrow on front shield. Reverse direction only if bale is lodged or hesitates to turn.

6 TRANSPORTATION & STORAGE

This machine is designed to fold for ease of transportation and storage. The rack and deflector assembly folds inside of bale chamber. The bale lifter folds and locks over the bale chamber. To unfold tine frame, tilt hinge frame hydraulically to allow tine frame to lay on ground. Lock tine frame pin, located at hinge point, to prevent tines from folding in each time a bale is loaded. Fold out rack and deflector hitching rack straps to the rack. Reverse procedure to fold for transport.

PREPARING FOR STORAGE

WARNING: When preparing machine for storage, use normal shut-down procedure.

Clean all mud, dirt, grease and other foreign material from the exterior of the machine. Cut all twine off from around the rotor. Wash the complete machine. If washing the Bale Buster with a high pressure washer, keep the nozzle away from the sealed bearings. Repaint places where bare metal is exposed - this will inhibit rusting.

Place the jackstands in the down and in locked position. Block the rear axle up taking the weight off the tires, but do not deflate the tires. If possible, store the machine in a dry, protected place. If it is necessary to store the machine outside,

cover it with waterproof canvas, plastic, or other suitable protective material.

Coat exposed lift cylinder rod with grease. Oil chains on conveyor. Lubricate thoroughly according to lubrication instructions. Repack wheel bearings.

Check the machine for any worn or broken parts. By ordering parts now, you will avoid delays when it is time to remove the machine from storage. When ordering parts always specify machine serial number and the part number of the replacement part. Part numbers can be found in the parts section of this manual.

REMOVING FROM STORAGE

Remove all protective coverings.

Remove blocking from under Bale Buster. Check tire pressure.

Lubricate machine in accordance with lubrication instructions found in this manual.

Check all hydraulic hoses for deterioration and, if necessary, replace. Tighten any loose bolts, nuts and hydraulic fittings.

Follow pre-starting inspection instructions.

LUBRICATION 7

Machine has 13 points to lubricate with grease gun every 15 hours of operating time. Use good grade of lubricant.

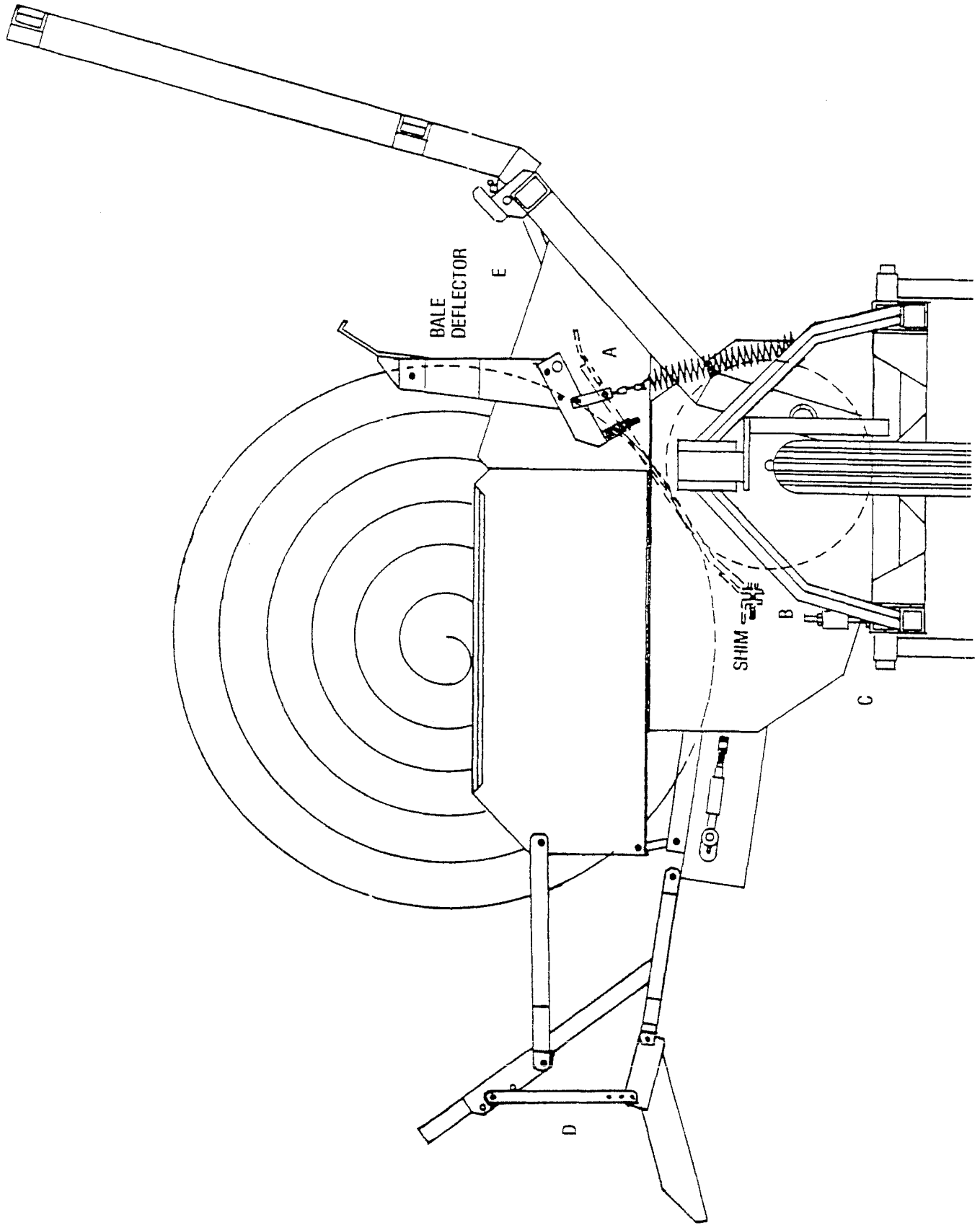
- 1. Cylinder bearings.....2
- 2. P.T.O. universal joints and telescope shaft3
- 3. Main frame pivot bushings.....2
- 4. Swivel wheel pivot4
- 5. Counter shaft bearings2

CAUTION: Always shut off machine before adjusting or lubricating.

8 MAINTENANCE AND ADJUSTMENTS

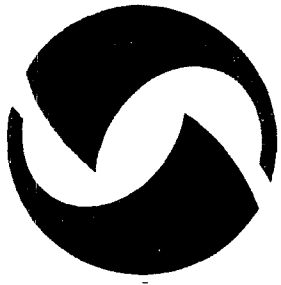
CAUTION: Before performing any maintenance or adjustments make sure machine is NOT running. If for any reason arc welding is to be done, always ground cylinder to frame of machine to prevent arcing in bearings.

1. Check for loose or badly worn bolts.
 2. Check for loose or misaligned sprockets on bale conveyor.
 3. Conveyor chain should be adjusted to allow lifting slat 1" to 1-1/2" above deck.
 4. Follow Lubrication Chart.
 5. Inspect rotor and all rotating parts for twine or wire build-up.
 6. Check air pressure in tires, 40 lbs.
 7. Discharge deflector has adjusting straps (opposite Page Ref. D) to allow forage to be spread to any desired width.
 8. Bale deflector (opposite Page Ref. E) has been pre-set at factory.
 9. Slug bars in front of rotor may be adjusted to expose more or less of the flail knives by adding or subtracting washers as shown on opposite Page Ref. A & B.
 10. Additional slug bars may be added to prevent slugs from going through rotor when shredding small or large square bales. A kit is available through your dealer.
 11. Check wheel bearings, and seals.
 12. Torque flail knife anchor bolts, 180 to 190 ft. lbs.
 13. Relieve all pressure in the hydraulic system before disconnecting the lines or performing other work on the system. Make sure all connections are tight and lines are in good condition before applying pressure to the system.
-



10 TROUBLE SHOOTING

PROBLEM	CAUSE	REMEDY
1. No Capacity	1. Bale turning too slow.	1. Open flow control valve.
2. Bale Does Not Turn	1. Bale lodged in feeder.	1. Reverse rotation of slat conveyor.
3. Excessive Vibration	1. Broken flail.	1. Replace flail.
	2. Defective cylinder bearing.	2. Replace bearing.
	3. Misaligned or worn PTO.	3. Replace worn part or complete PTO.
4. Machine Will Not Lift Bale	1. Tractor hydraulic pressure too low.	1. Check pressure.
	2. Hydraulic oil leaking by piston in cylinder.	2. Repair or replace hydraulic cylinder.
5. Forage Too Coarse	1. Conveyor speed too fast.	1. Decrease conveyor speed.
	2. Slug bar set too low.	2. Raise slug bar to expose less flail.
	3. Stripper bar removed.	3. Replace or add additional stripper bar.
6. Forage Too Fine	1. Conveyor speed too slow.	1. Increase conveyor speed.
	2. Slug bar set too high.	2. Lower slug bar to expose more flail.
	3. Extra stripper bar installed.	3. Remove one or all stripper bars.
7. Forage Blows Past Bunk When Bunk Feeding	1. Deflector too high.	1. Lower deflector. Add (optional) 18"x69-3/4" deflector belting.



DURATECH

HAYBUSTER

**BIG BALE BUSTER
2 POINT HOOKUP
PARTS BOOK**

256 2-PT

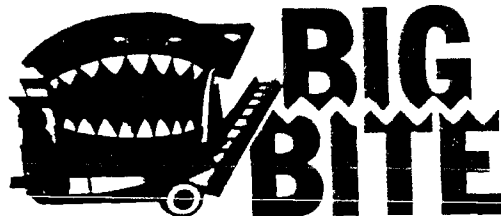
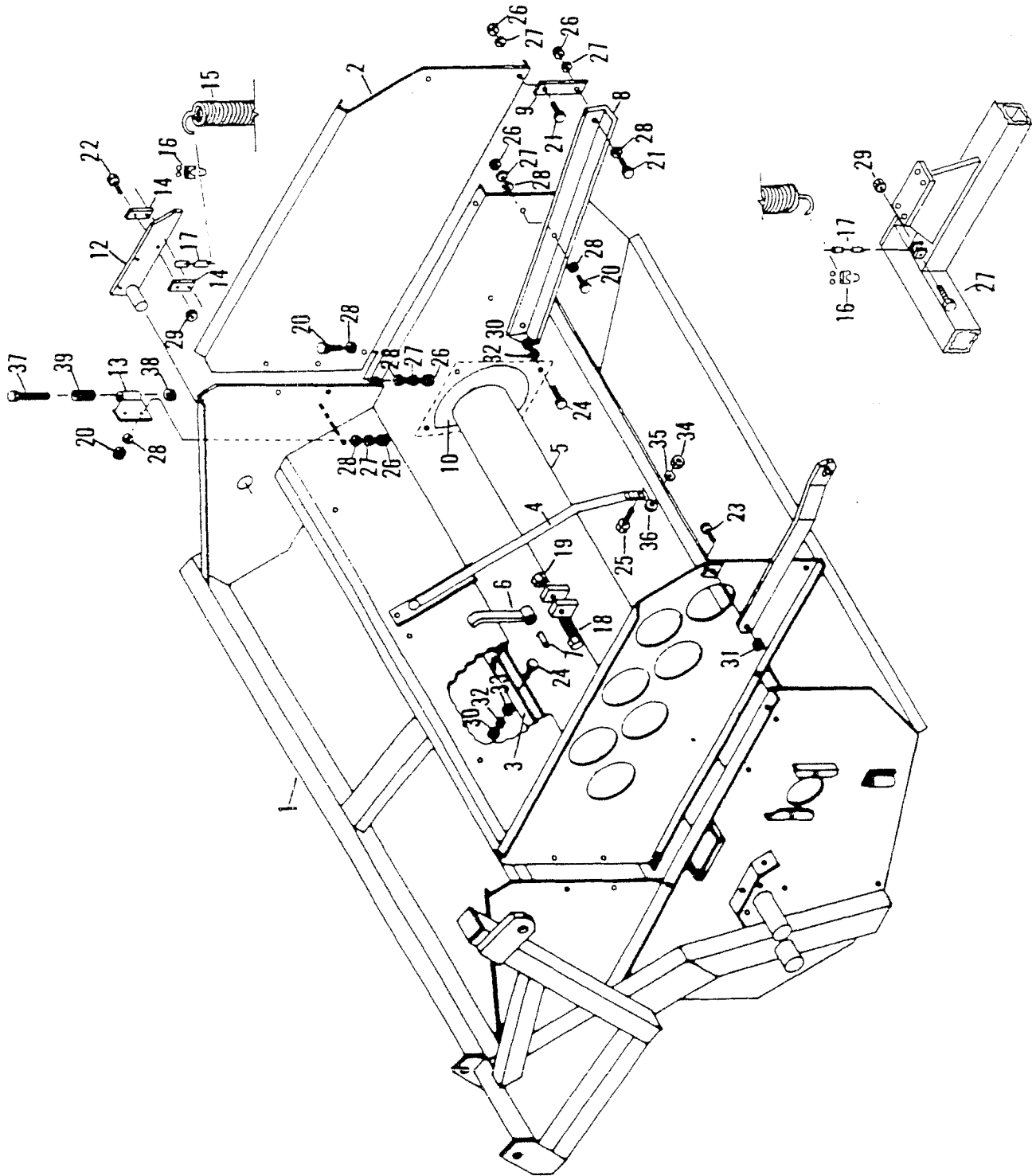


TABLE OF CONTENTS 11

Hinge Frame Assembly #1, Ser. No. 101 to 950.....	12-13
Hinge Frame Assembly #2, Ser. No. 101 to 950.....	14-15
Hinge Frame Assembly #2, Ser. No. 951 thru 2349	16-17
Hinge Frame Assembly #1, Ser. No. 4058 thru	18-19
Hinge Frame Assembly #1, Ser. No. 951 thru 4057	20-21
Main Frame & Swivel Wheel Assembly, Ser. No. 101 to 950.....	22-23
Main Frame & Swivel Wheel Assembly, Ser. No. 951 to 1150.....	24-25
Main Frame & Swivel Wheel Assembly, Ser. No. 1151 thru	26-27
Bale Conveyor Assembly, Ser. No. 101 to 950	28-29
Bale Conveyor Assembly, Ser. No. 951 thru 2349	30-31
Bale Conveyor Assembly, Ser. No. 2350 thru 4057	32-33
Bale Conveyor Assembly, Ser. No. 4058 thru	34-35
Rack and Deflector Assembly, Ser. No. 101 thru 1496	36
Rack and Deflector Assembly, Ser. No. 1497 to 2449	37
Spring Loaded Deflector Adjustment	38-39
Rack and Deflector Assembly, Ser. No. 4058 thru	40-41
Tines and Tine Frame Assembly, Ser. No. 101 to 950.....	42
Tines and Tine Frame Assembly, Ser. No. 951 thru 3597.....	43
Tines and Tine Frame Assembly, Ser. No. 3598 thru.....	44
Hydraulics Parts List, Ser. No. 101 thru	45
P.T.O. Assembly Parts List, Ser. No. 101 to 950	46
P.T.O. Assembly Parts List, Ser. No. 951 thru	47
P.T.O. Assembly Parts List, Ser. No. 3566 thru	48
P.T.O. Assembly Partt List, Ser. No. 4058 thru	49
Flow Control Valve, Ser. No. 101 thru	50
Hydraulic Cylinder, Ser. No. 101 thru	51
Orbit Motor, Ser. No. 101 thru	52
Bale Buster Quik Tatch, Ser. No. 1151.....	54-55
Bale Buster Decal Requirements	56-57

12 HINGE FRAME ASSEMBLY #1

Ser. No. 101 to 950



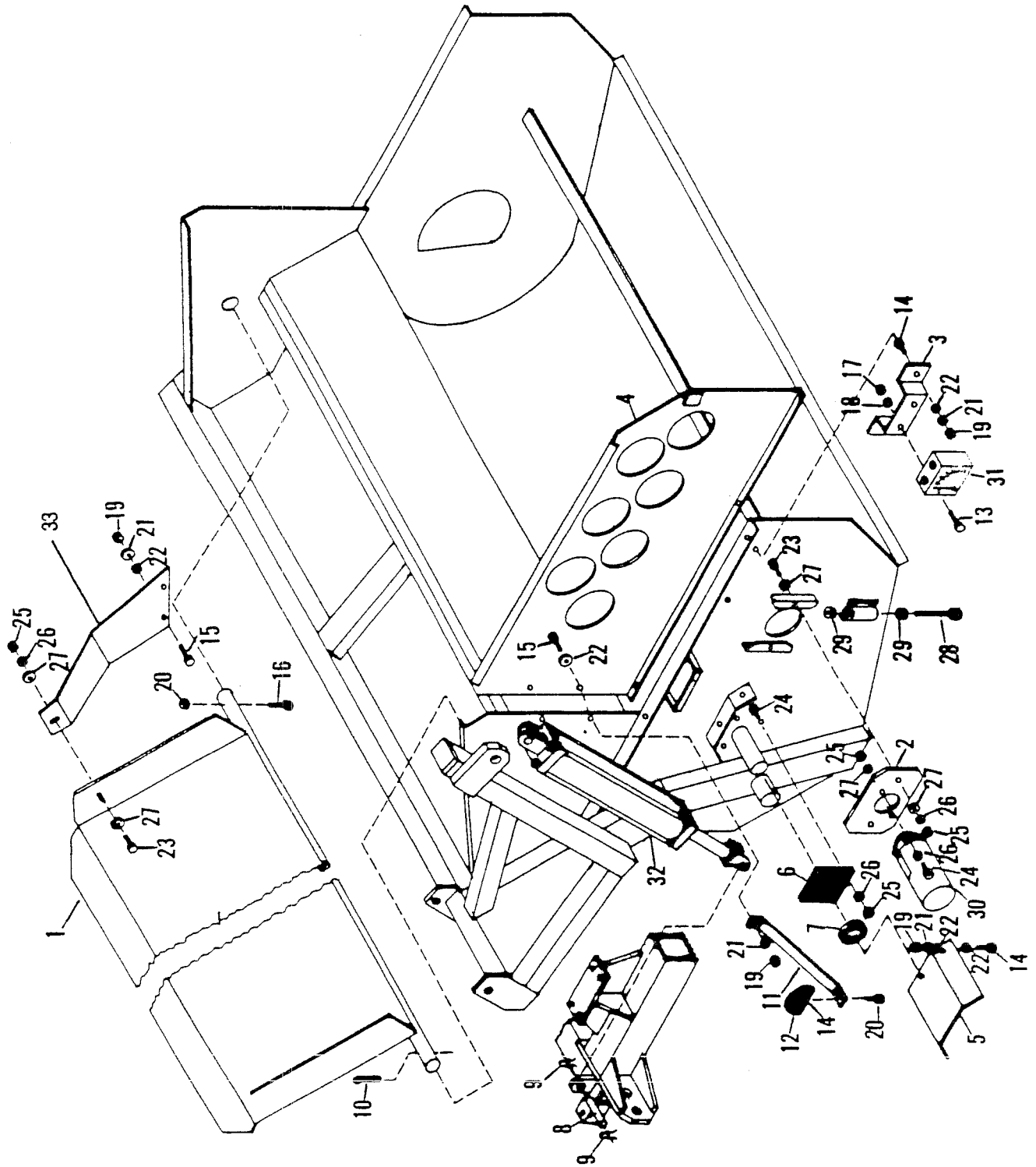
HINGE FRAME ASSEMBLY #1 13

Ser. No. 101 to 950

ITEM	PART NO.	QTY.	DESCRIPTION
1	8100066	1	Hinge Frame
2	8100023	1	Rear Shield
3	8100024	1	Stripper Plate
4	8100025	4	Slug Bar
5	8100026	1	Rotor
6	5200004	32	Flail
7	8100027	32	Flail Bushings
8	8100028	2	Conveyor Mount
9	8100029	2	Hanger
10	8100067	1	Rotor End Plate
11	8100031	2	Rack Strap
12	8100068	1	Lever
13	8100069	1	Lever Stop
14	8100034	2	Connector Link
15	6100013	1	Spring
16	4800099	2	Clamp, 5/16"
17	1100095	1	1/4" Chain, 5 Links
18	4800100	32	5/8" x 4" Grade 5 Bolt
19	4900012	32	5/8" Self Locking Nut
20	4800003	13	3/8" x 1" Hex Head Bolt
21	4800098	2	3/8" x 1-1/4" Hex Head Bolt
22	4800034	3	3/8" x 1-1/2" Hex Head Bolt
23	4800018	2	1/2" x 1-1/4" Hex Head Bolt
24	4800082	9	1/2" x 1-1/2" Hex Head Bolt
25	4800010	8	5/8" x 2" Hex Head Bolt
26	4900002	15	3/8" Hex Nut
27	5000019	15	3/8" Lock Washer
28	5000001	26	3/8" Flat Washer
29	4900023	3	3/8" Self Locking Nut
30	4900001	9	1/2" Hex Nut
31	4900014	2	1/2" Self Locking Nut
32	5000006	9	1/2" Lock Washer
33	5000004	5	1/2" Flat Washer
34	4900005	8	5/8" Hex Nut
35	5000003	8	5/8" Lock Washer
36	5000002	20	5/8" Flat Washer
37	4800139	1	3/4" x 4-1/2" Hex Head Bolt
38	4900013	1	3/4" Lock Nut
39	6100005	1	Spring

14 HINGE FRAME ASSEMBLY #2

Ser. No. 101 to 950



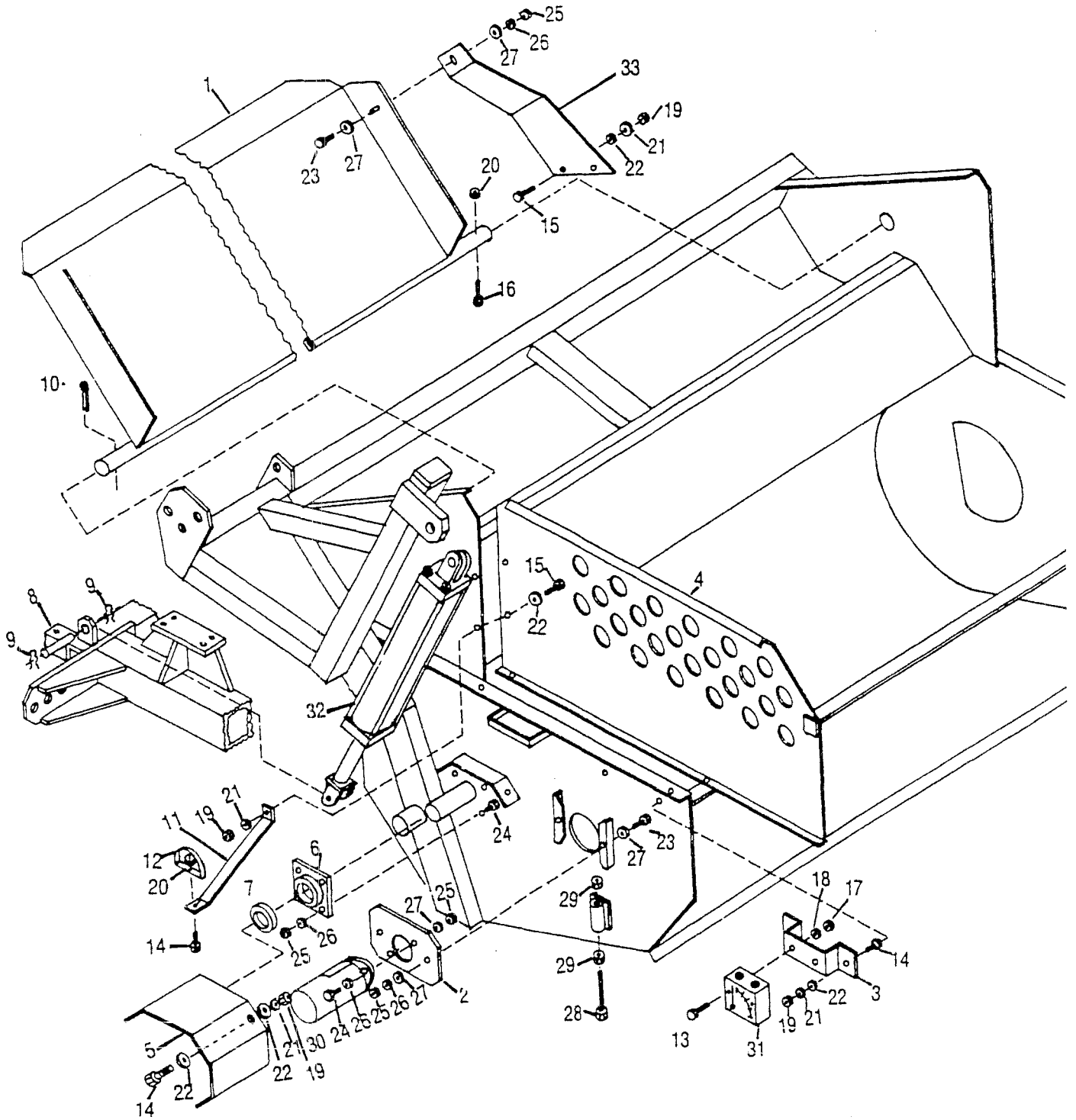
HINGE FRAME ASSEMBLY #2 15

Ser. No. 101 to 950

ITEM	PART NO.	QTY.	DESCRIPTION
1	8100035	1	Bale Deflector
2	8100036	1	Hydraulic Motor Mounting Bracket
3	8100037	1	Flow Control Mounting Bracket
4	8100038	1	Front Shield
5	8100070	1	P.T.O. Shield
6	1900011	2	Rotor Bearing, 4-Hole Flange 1-3/4"
7	2200008	2	Rotor Bearing Lock Collar
8	4100030	2	Cylinder Pin
9	4100031	4	Hair Pin
10	4800043	2	1/4" x 2-1/2" Cotter Key
11	8100040	1	Hose Hanger Bracket
12	8100041	1	Hose Hanger
13	4800101	2	1/4" x 2-1/2" Hex Head Bolt
14	4800003	6	3/8" x 1" Hex Head Bolt
15	4800098	3	3/8" x 1-1/4" Hex Head Bolt
16	4800029	1	3/8" x 2-1/2" Grade 5 Bolt
17	4900009	2	1/4" Hex Nut
18	5000024	2	1/4" Lock Washer
19	4900002	8	3/8" Hex Nut
20	4900023	2	3/8" Self Locking Nut
21	5000019	8	3/8" Self Locking Nut
21	5000019	8	3/8" Lock Washer
22	5000001	8	3/8" Flat Washer
23	4800018	3	1/2" x 1-1/4" Hex Head Bolt
24	4800082	10	1/2" x 1-1/2" Hex Head Bolt
25	4900001	13	1/2" Hex Nut
26	5000006	13	1/2" Lock Washer
27	5000004	7	1/2" Flat Washer
28	4800102	2	3/4" x 7" Adjusting Bolt
29	4900004	4	3/4" Hex Nut
30	3900003	1	207 Hydraulic Motor (See Page 50)
31	3800036	1	Flow Control Valve (see Page 50)
32	4100027	1	Hydraulic Cylinder (see Page 51)
33	8100142	1	Bale Guide Brace

16 HINGE FRAME ASSEMBLY #2

Ser. No. 951 thru



HINGE FRAME ASSEMBLY #2 17

Ser. No. 951 thru

ITEM	PART NO.	QTY.	DESCRIPTION
1	8100035	1	Bale Deflector
2	8100036	1	Hydraulic Motor Mounting Bracket 116
3	8100037	1	Flow Control Mounting Bracket
4	8100038	1	Front Shield
5	8100070	1	P.T.O. Shield
6	1900011	2	Rotor Bearing, 4-Hole Flange 1-3/4"
7	2200008	2	Rotor Bearing Lock Collar
8	4100030	2	Cylinder Pin
9	4100031	4	Hair Pin
10	4800043	2	1/4" x 2-1/2" Cotter Key
11	8100040	1	Hose Hanger Bracket
12	8100041	1	Hose Hanger
13	4800101	2	1/4" x 2-1/2" Hex Head Bolt
14	4800003	6	3/8" x 1" Hex Head Bolt
15	4800098	3	3/8" x 1-1/4" Hex Head Bolt
16	4800029	1	3/8" x 2-1/2" Grade 5 Bolt
17	4900009	2	1/4" Hex Nut
18	5000024	2	1/4" Lock Washer
19	4900002	8	3/8" Hex Nut
20	4900023	2	3/8" Self Locking Nut
21	5000019	8	3/8" Self Locking Nut
22	5000001	8	3/8" Flat Washer
23	4800018	3	1/2" x 1-1/4" Hex Head Bolt
24	4800082	10	1/2" x 1-1/2" Hex Head Bolt
25	4900001	13	1/2" Hex Nut
26	5000006	13	1/2" Lock Washer
27	5000004	7	1/2" Flat Washer
28	4800102	2	3/4" x 7" Adjusting Bolt
29	4900004	4	3/4" Hex Nut
30	3900003	1	207 Hydraulic Motor (See Page 52)
31	3800036	1	Flow Control Valve (see Page 50)
32	4100027	1	Hydraulic Cylinder (see Page 51)
33	8100142	1	Bale Guide Brace

Serial No. 2350 Thru

4A 8100175 1 Front Shield Wide Conveyor

Serial No. 4058 Thru

4B 8100439 Front Shield
30A 3900019 1 Orbit Motor Complete Dan Foss 151-2088
32A 4100119 1 Hydraulic Cylinder, Welded

HINGE FRAME ASSEMBLY #1 21

Ser. No. 951 thru 4057

ITEM	PART NO.	QTY.	DESCRIPTION
1	8100123	1	Hinge Frame
2	8100023	1	Rear Shield
3	8100024	1	Stripper Plate
4	8100025	4	Slug Bar
5	8100124	1	32 Flail Rotor SN 101 to 2964
5A	8100218	1	26 Flail Rotor SN 2965 thru
6	5200004	32	26 Flail
7	8100027	32	26 Flail Bushings
8	8100028	2	Conveyor Mount
9	8100029	2	Hanger
10	8100067	1	Rotor End Plate
11	8100422	2	Rack Strap
12	8100068	1	Lever
13	8100069	1	Lever Stop
14	8100034	2	Connector Link
15	6100013	1	Spring
16	4800099	2	Clamp, 5/16"
17	1100095	1	1/4" Chain, 5 Links
18	4800100	32	26 5/8" x 4" Grade 5 Bolt
19	4900012	32	26 5/8" Self Locking Nut
20	4800003	13	3/8" x 1" Hex Head Bolt
21	4800098	2	3/8" x 1-1/4" Hex Head Bolt
22	4800034	3	3/8" x 1-1/2" Hex Head Bolt
23	4800018	2	1/2" x 1-1/4" Hex Head Bolt
24	4800082	9	1/2" x 1-1/2" Hex Head Bolt
25	4800010	8	5/8" x 2" Hex Head Bolt
26	4900002	15	3/8" Hex Nut
27	5000019	15	3/8" Lock Washer
28	5000001	26	3/8" Flat Washer
29	4900023	3	3/8" Self Locking Nut
30	4900001	9	1/2" Hex Nut
31	4900014	4	1/2" Self Locking Nut
32	5000006	9	1/2" Lock Washer
33	5000004	7	1/2" Flat Washer
34	4900005	8	5/8" Hex Nut
35	5000003	8	5/8" Lock Washer
36	5000002	20	5/8" Flat Washer
37	4800139	1	3/4" x 4-1/2" Hex Head Bolt
38	4900013	1	3/4" Lock Nut
39	6100005	1	Spring
40	8100125	1	Rotor End Shield
41	8100168	2	Rack Strap Locking Bracket
42	6100002	2	Spring
43	4800068	2	1/2" x 3" Hex Head Bolt

Serial No. 2350 Thru

1A	8100172	1	Hinge Frame Wide Conveyor
2A	8100173	1	Rear Shield Wide Conveyor
8A	8100174	2	Wide Conveyor Mount

MAIN FRAME & SWIVEL WHEEL ASSEMBLY 23

Ser. No. 101 thru 950

ITEM	PART NO.	QTY.	DESCRIPTION
1	8100071	1	Main Frame
2	8100053	2	Stand
3	4800107	2	1/8" Hair Pin
4	8100054	1	Swivel Wheel Pivot Weldment
5	8100055	1	Swivel Wheel Pivot Thrust Washer
6	8100056	1	Swivel Wheel Retainer Washer
7	8100057	1	Swivel Wheel Frame Weldment
8	3000007	1	Spindle
9	2800006	1	Wheel, 15", 5-Bolt
10	2600008	1	Tire, 760 x 15", Rib Type
11	2700005	1	Tube, 15"
12	2900039	1	Hub
13	2900015	1	Cone, Inner
14	2900018	1	Cone, Outer
15	2900016	1	Cup, Inner
16	2900017	1	Cup, Outer
17	2900014	1	Seal
18	3000006	1	Nut
19	2900019	1	Washer
20	2900013	1	Cap
21	3000005	1	Cotter Key
22	8100058	2	Hinge Weldment
23	8100059	2	Shim
24	4800086	2	Link Pin, 1-1/8"
25	4900024	2	Nut, 1-1/8"
26	5000025	2	Lock Washer, 1-1/8"
27	4800114	8	1/2" x 2" Hex Head Bolt, Grade 5
28	4900001	8	1/2" Hex Nut
29	5000006	8	1/2" Lock Washer
30	4800010	8	5/8" x 2" Hex Head Bolt
31	4800106	1	5/8" x 1-1/2" Hex Head Bolt
32	4900005	4	5/8" Hex Nut
33	5000003	5	5/8" Lock Washer
34	3800041	2	Grease Zerk, Straight
35	2900012	5	Wheel Bolt
36	3800042	2	Grease Zerk, 90°
37	4800140	2	1" x 3" Bolt
38	5000053	2	1" Lock Washer
39	4900031	2	Nut
40	4800115	2	3/4" x 2-1/2" Bolt
41	5000012	2	3/4" Lock Washer
42	5000005	2	3/4" Flat Washer
43	4900004	2	3/4" Hex Nut
44	5000002	4	5/8" Flat Washer
45	8100072	1	Swivel Wheel Frame
46	8100073	1	Adjustable Hitch, Right
47	8100074	1	Adjustable Hitch, Left

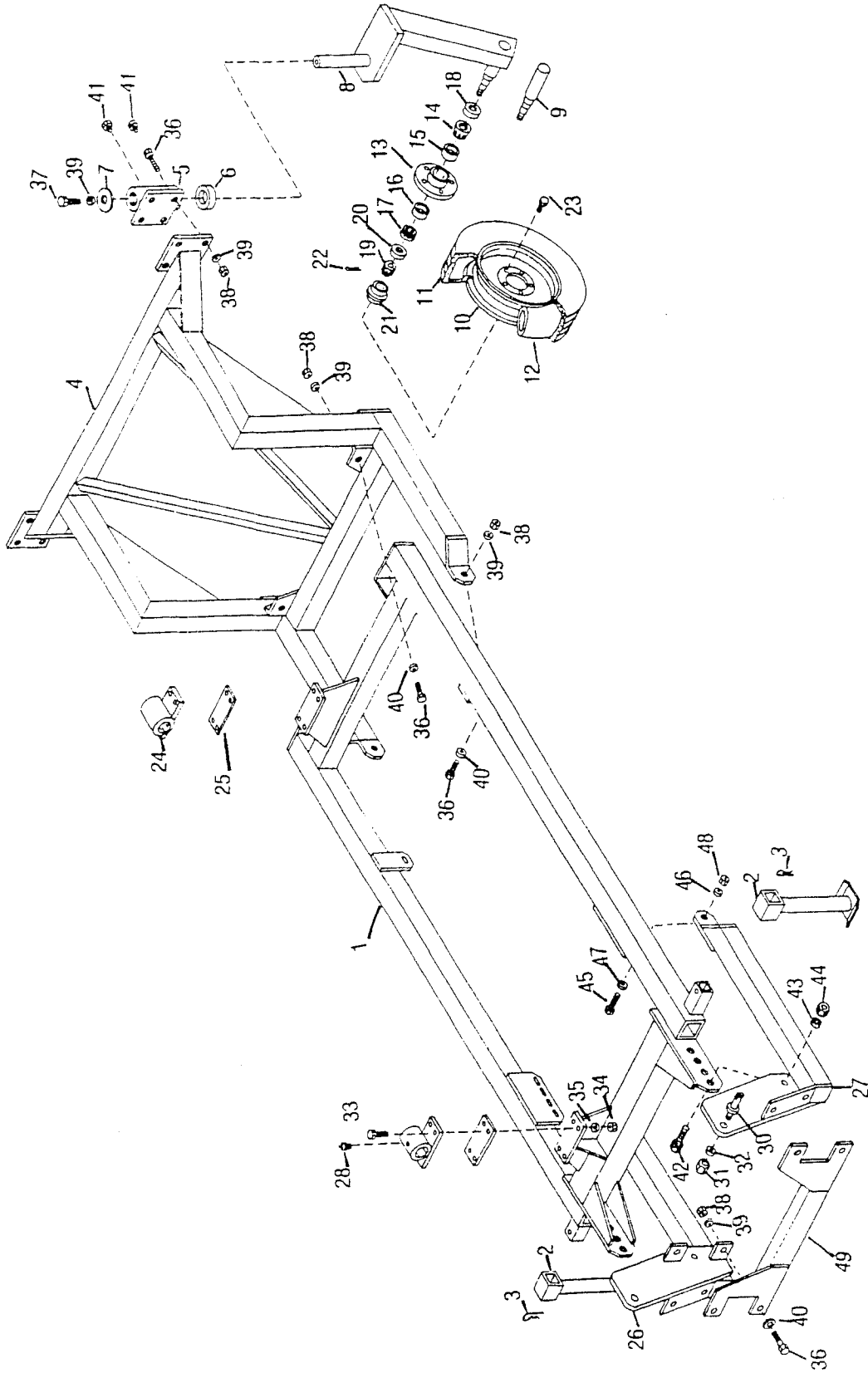
MAIN FRAME & SWIVEL WHEEL ASSEMBLY 25

Ser. No. 951 to 1150

ITEM	PART NO.	QTY.	DESCRIPTION
1	8100126	1	Main Frame
2	8100053	2	Stand
3	4800107	2	1/8" Hair Pin
4	8100084	1	Dual Wheel Frame
5	8100054	2	Swivel Wheel Pivot Weldment
6	8100055	2	Swivel Wheel Pivot Thrust Washer
7	8100056	2	Swivel Wheel Retainer Washer
8	8100057	2	Swivel Wheel Frame Weldment
9	3000007	2	Spindle
10	2800006	2	Wheel 15", 5-Bolt
11	2600008	2	Tire 760 x 15", Rib Type
12	2700005	2	Tube 15"
13	2900039	2	Hub
14	2900015	2	Cone, Inner
15	2900016	2	Cup, Inner
16	2900017	2	Cup, Outer
17	2900018	2	Cone, Outer
18	2900014	1	Seal
19	3000006	2	Nut
20	290019	2	Washer
21	2900013	2	Cap
22	3000005	1	Cotter Key
23	2900012	10	Wheel Bolt
24	8100058	2	Hinge Weldment
25	8100059	22	Shim
26	8100127	1	Adjustable Hitch, Right
27	8100128	1	Adjustable Hitch, Left
28	3800042	2	Grease Zerk, 90°
29			
30	4800086	2	Link Pin 1-1/8"
31	4900024	2	Nut 1-1/8"
32	5000025	2	Lock Washer 1-1/8"
33	4800114	8	1/2" x 2" Grade 5 Hex Bolt
34	4900001	8	1/2" Hex Nut
35	5000006	8	1/2" Lock Washer
36	4800010	12	5/8" x 2" Hex Bolt
37	4800106	2	5/8" x 1-1/2" Hex Bolt
38	4900005	12	5/8" Hex Nut
39	5000003	14	5/8" Lock Washer
40	5000002	4	5/8" Flat Washer
41	3800041	4	Grease Zerk, Straight
42	4800140	2	1" x 3" Bolt
43	5000053	2	1" Lock Washer
44	4900031	2	1" Hex Nut
45	4800115	2	3/4" x 2-1/2" Bolt
46	5000012	2	3/4" Lock Washer
47	5000005	2	3/4" Flat Washer
48	4900004	2	3/4" Hex Nut
49	2900011	2	Hub Complete

26 MAIN FRAME & SWIVEL WHEEL ASSEMBLY

Ser. No. 1151 thru



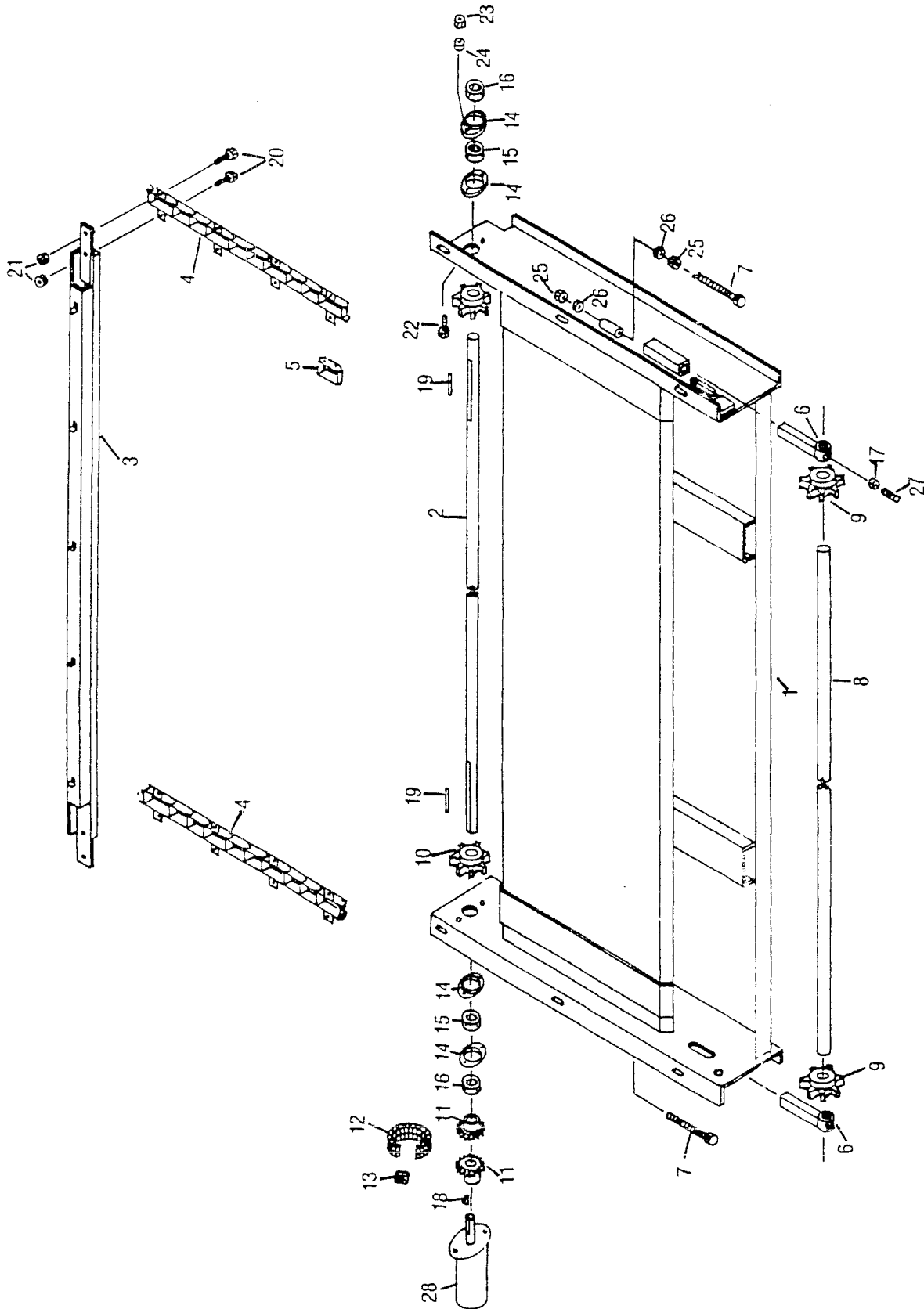
MAIN FRAME & SWIVEL WHEEL ASSEMBLY 27

Ser. No. 1151 thru

ITEM	PART NO.	QTY.	DESCRIPTION
1	8100126	1	Main Frame
2	8100053	2	Stand
3	4800107	2	1/8" Hair Pin
4	8100084	1	Dual Wheel Frame
5	8100054	2	Swivel Wheel Pivot Weldment
6	8100055	2	Swivel Wheel Pivot Thrust Washer
7	8100056	2	Swivel Wheel Retainer Washer
8	8100057	2	Swivel Wheel Frame Weldment
9	3000007	2	Spindle
10	2800006	2	Wheel 15", 5-Bolt
11	2600008	2	Tire 760 x 15", Rib Type
12	2700005	2	Tube 15"
13	2900039	2	Hub
14	2900015	2	Cone, Inner
15	2900016	2	Cup, Inner
16	2900017	2	Cup, Outer
17	2900018	2	Cone, Outer
18	2900014	1	Seal
19	3000006	2	Nut
20	2900019	2	Washer
21	2900013	2	Cap
22	3000005	1	Cotter Key
23	2900012	10	Wheel Bolt
24	8100058	2	Hinge Weldment
25	8100059	2	Shim
26	8100038	1	Adjustable Hitch, Right
27	8100139	1	Adjustable Hitch, Left
28	3800042	2	Grease Zerk - 90°
29			
30	4800086	2	Link Pin, 1-1/8"
31	4900024	2	Nut 1-1/8"
32	5000025	2	Lock Washer 1-1/8"
33	4800114	8	1/2" x 2" Grade 5 Hex Bolt
34	4900001	8	1/2" Hex Nut
35	5000006	8	1/2" Lock Washer
36	4800010	16	5/8" x 2" Hex Bolt
37	4800106	2	5/8" x 1-1/2" Hex Bolt
38	4900005	16	5/8" Hex Nut
39	5000003	18	5/8" Lock Washer
40	5000002	8	5/8" Flat Washer
41	3800041	4	Grease Zerk, Straight
42	4800140	2	1" x 3" Bolt
43	5000029	2	1" Lock Washer
44	4900031	2	1" Hex Nut
45	4800115	2	3/4" x 2-1/2" Bolt
46	5000012	2	3/4" Lock Washer
47	5000005	2	3/4" Flat Washer
48	4900004	2	3/4" Hex Nut
49	8100137	1	Brace
50	2900011	2	Hub Complete

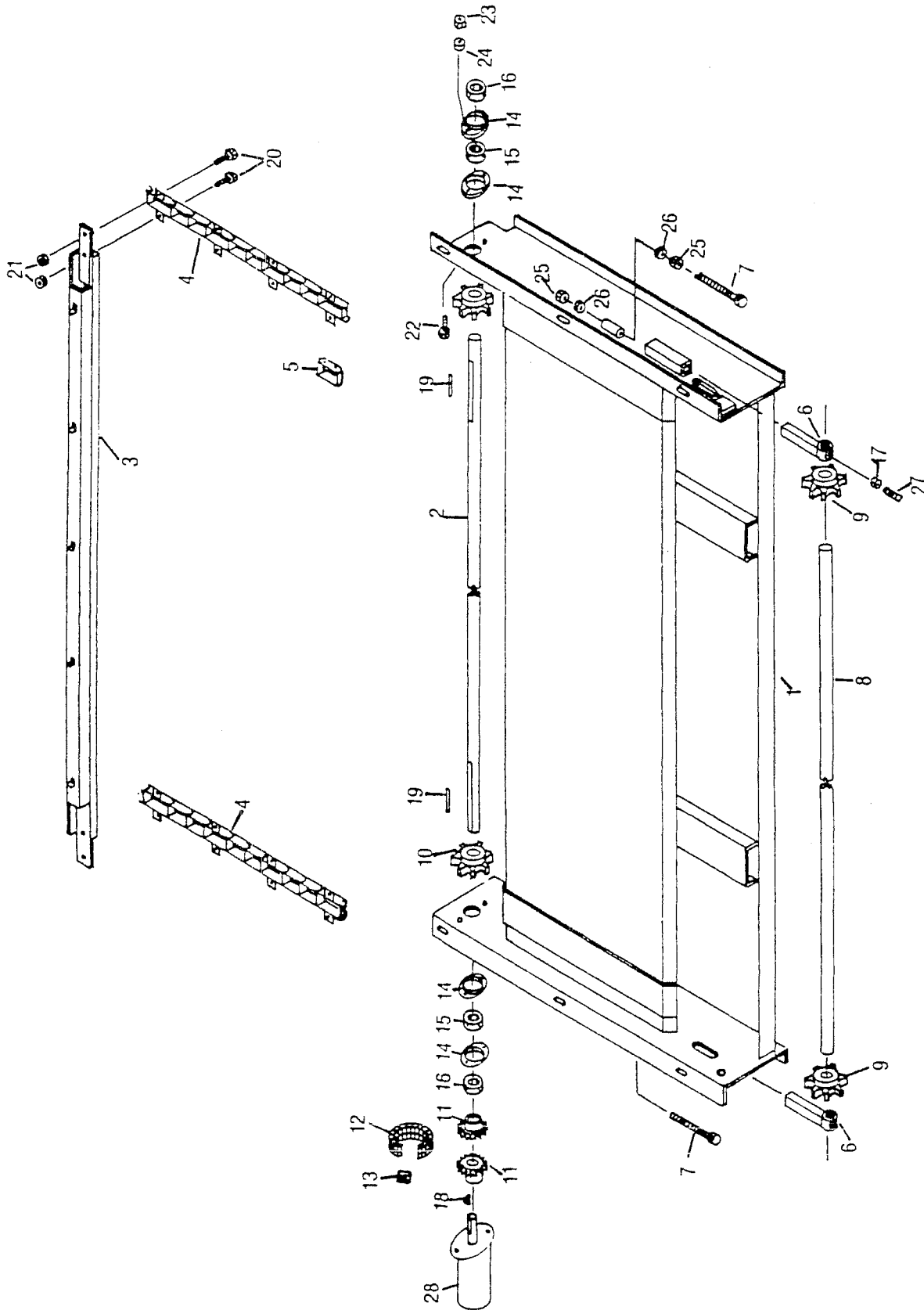
28 BALE CONVEYOR ASSEMBLY

Ser. No. 101 to 950



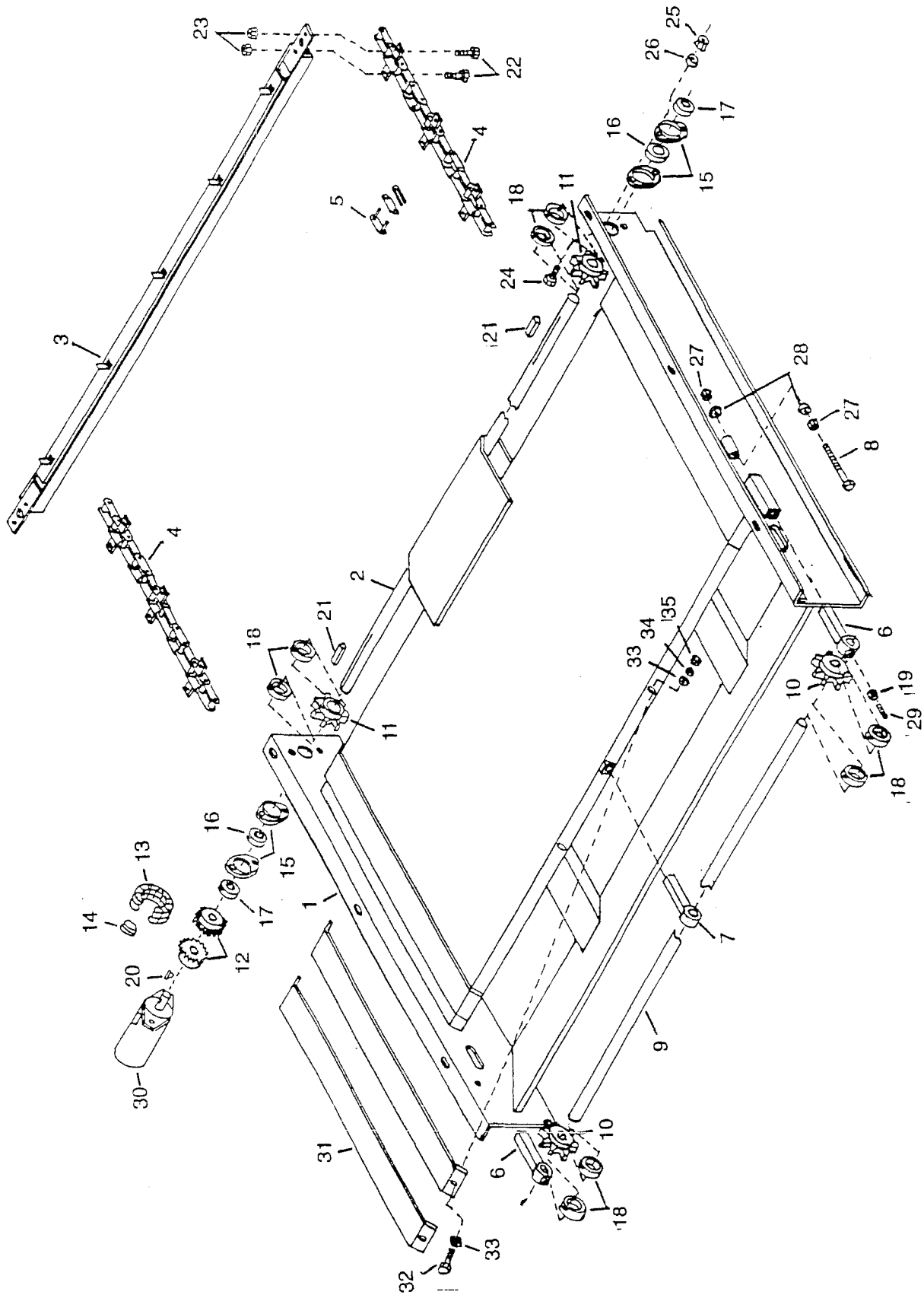
30 BALE CONVEYOR ASSEMBLY

Ser. No. 951 thru 2349



32 BALE CONVEYOR ASSEMBLY

Ser. No. 2350 thru 4057



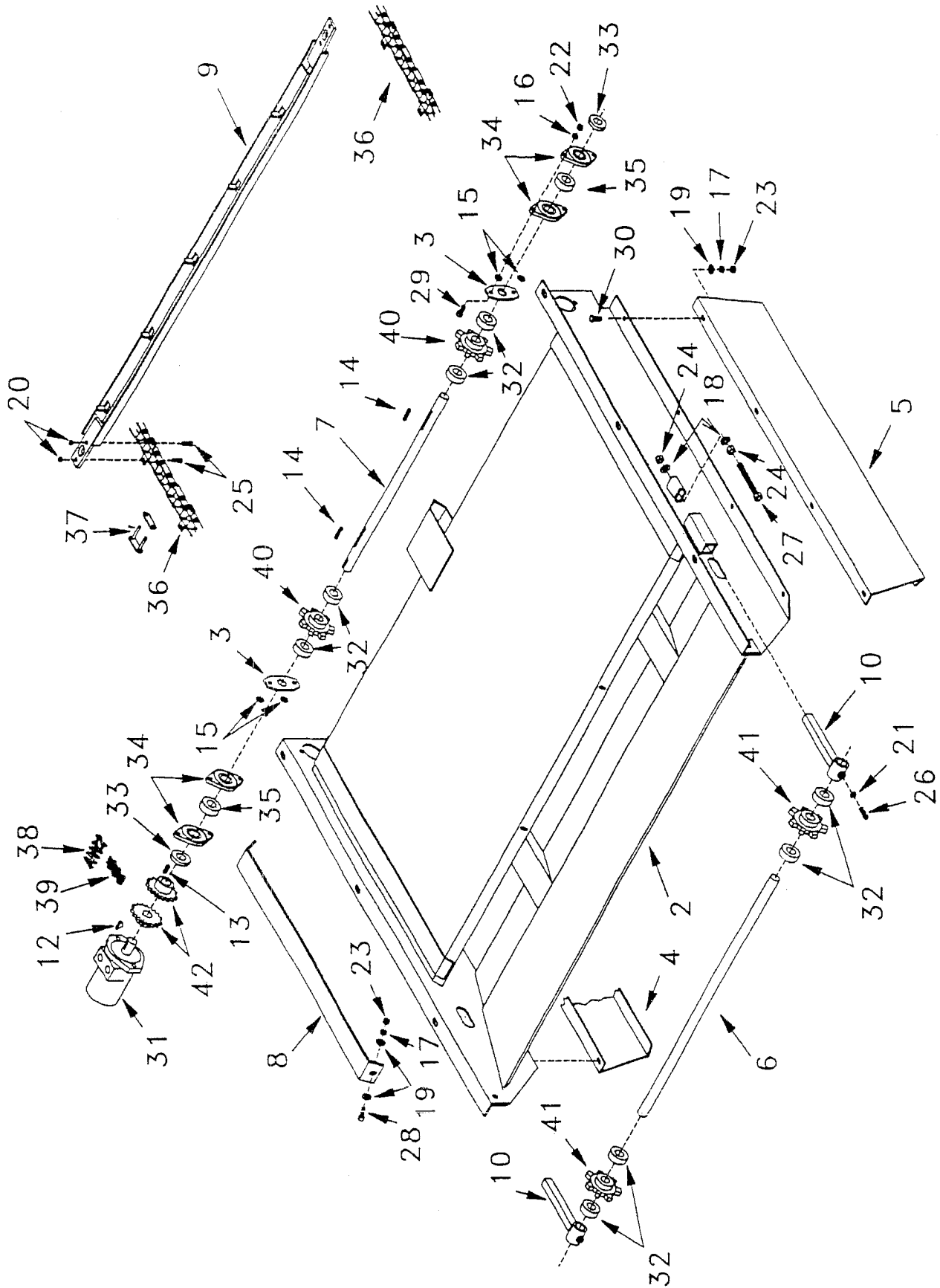
BALE CONVEYOR ASSEMBLY 33

Ser. No. 2350 thru 4057

ITEM	PART NO.	QTY.	DESCRIPTION
1	8100169	1	Wide Conveyor Frame
2	8200002	1	Drive Shaft 1" x 70-1/2"
3	8100170	9	Slat (1" Lugs)
4	1100150	2	Chain CA620 44 Links and 9 Attachments
5	1100103	2	Connector Link CA620
6	8100051	2	Tightener Bracket
7	8100398	1	Idler Shaft Bushing Bracket
8	4800104	2	Adjusting Bolt 1/2" x 5"
9	8200004	1	Idler Spindle 1" x 71-1/2"
10	1000088	2	Idler Sprocket
11	1000089	2	Drive Sprocket
12	1000029	2	Coupler Sprocket
13	1100026	1	Coupler Chain
14	1100099	1	Connector Link
15	2100003	4	Flangette
16	2000002	2	Bearing 1" Bore
17	2200004	2	Bearing Lock Collar
18	2200009	8	1" Shaft Collar
19	4900026	2	3/8" Jam Nut
20	6200011	1	1/4" x 1" Woodruff Key
21	6200012	2	1/4" x 2" Square Key
22	4800147	36	5/16" x 7/8" Grade 5 Bolt
23	4900011	36	5/16" Lock Nut
24	4800008	4	5/16" x 3/4" Bolt
25	4900003	4	5/16" Nut
26	5000022	4	5/16" Lock Washer
27	4900001	4	1/2" Nut
28	5000004	4	1/2" Flat Washer
29	4800105	2	3/8" x 1" Set Screw
30	3900003	1	Orbit Motor (See Page 50)
31	8100171	2	Plastic Rub Plate (Wide Conveyor)
32	4800098	4	3/8" x 1-1/4" Bolt
33	5000001	8	3/8" Flat Washer
34	5000019	4	3/8" Lock Washer
35	4900002	4	3/8" Nut
36	8100360	1	Slat End (Weld On) Not Shown
37	7500147	1	Brass Bushing (Idler Sprocket) Not Shown

34 BALE CONVEYOR ASSEMBLY

Ser. No. 4058 thru



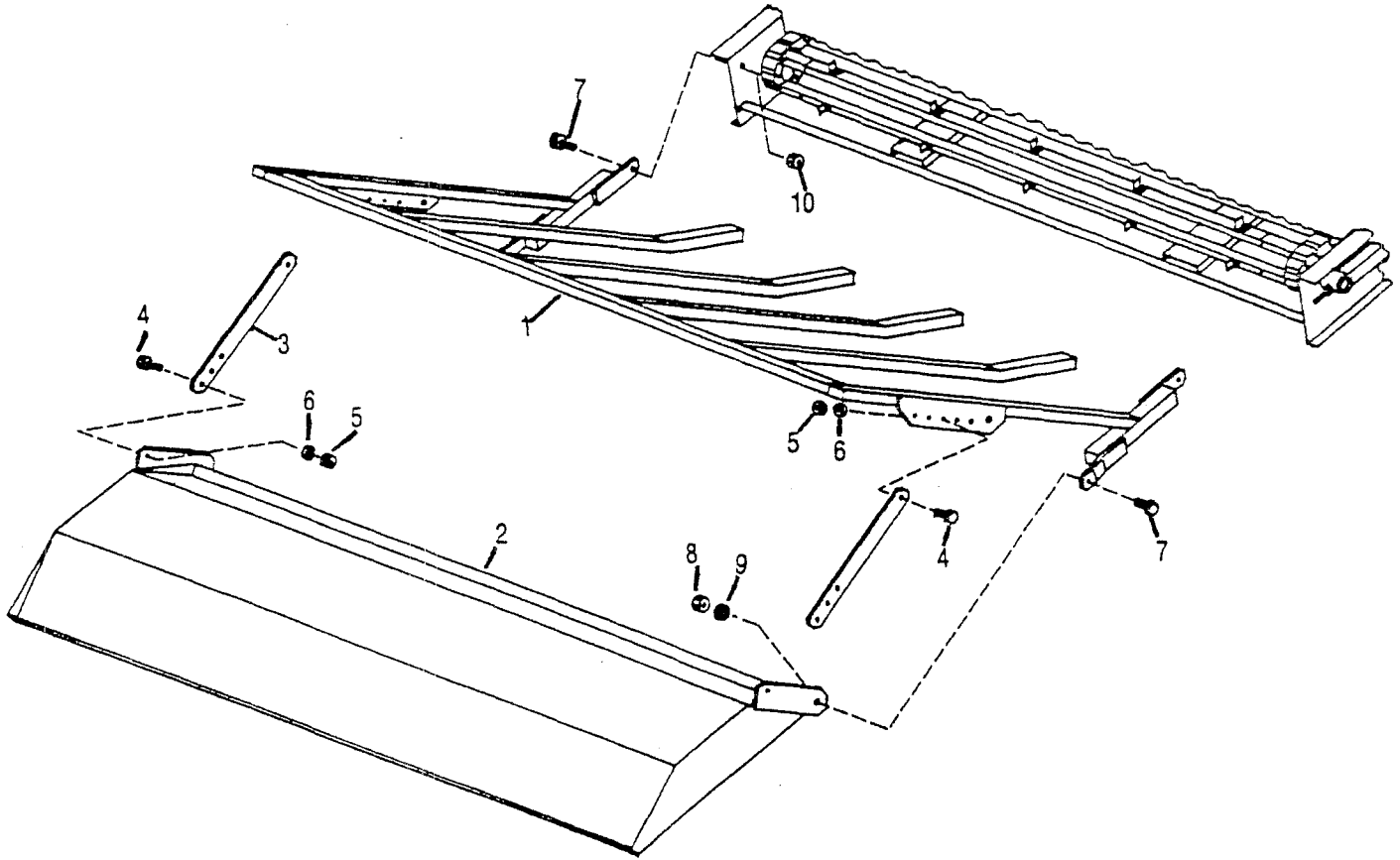
BALE CONVEYOR ASSEMBLY 35

Ser. No. 4058 thru

ITEM	PART NO.	QTY.	DESCRIPTION
1	8100459		Cnvyr/Assy/256
2	8100454	1	Frame/Convyr/Shredder/256
3	8100449	2	Guard/Twins/Cnvyr/256
4	8100410	1	Conveyor Side Ext. R.H.
5	8100409	1	Conveyor Side Ext. L.H.
6	8100401	1	Idler Shaft 1 x 71-1/2
7	8100399	1	Shaft/Drive/1x70-1/2
8	8100171	2	Plastic Strip Wide Conveyor
9	8100170	9	Slat (1" Lugs)
10	8100051	2	Tightener Bracket
11	7500147	4	1" ID Oilite Bushing
12	6200011	1	Key/Woodruff/1/4x1
13	6200010	1	Key/SQ/1/4x1
14	6200005	2	Key/SQ/1/4x1-1/2
15	5000023	4	Washer/Flat/5/16
16	5000022	4	Washer/Lock/5/16
17	5000019	12	Washer/Lock/3/8
18	5000004	4	Washer/Flat/1/2
19	5000001	16	Washer/Flat/3/8
20	4900099	36	Nut/Lock/Hex/5/16/GR8
21	4900026	2	Nut/Jam/3/8
22	4900003	4	Nut/Hex/5/16
23	4900002	12	Nut/Hex/3/8
24	4900001	4	Nut/Hex/1/2
25	4800393	36	Bolt/Hex/5/16x7/8/GR8
26	4800105	2	Screw/Set/SQ HD/3/8x1
27	4800104	2	Bolt/Hex/1/2x5
28	4800098	4	Bolt/Hex/3/8x1-1/4
29	4800013	4	Bolt/Hex/5/16x1
30	4800003	8	Bolt/Hex/3/8x1
31	3900003	1	Orbit Motor
32	2000809	8	Shaft/College (set)/1"
33	2000804	2	Collar/Locking/1"
34	2000703	4	2 Flangette-Plated/1"
35	2000002	2	1" w/Collar
36	1100150	2	Chain/2/620CA/11/w/Attach
37	1100103	2	Cain/620CA/CL
38	1100099	1	Chain/50DB1/CL
39	1100026	1	Chain/50DBL/13
40	1000089	2	Spkt/662/7/1//1//1/4 KW/Drive
41	1000088	2	Spkt/662/7/1/Idler Cast
42	1000029	2	Spkt/50/114/1/1//4 KW

36 RACK AND DEFLECTOR ASSEMBLY

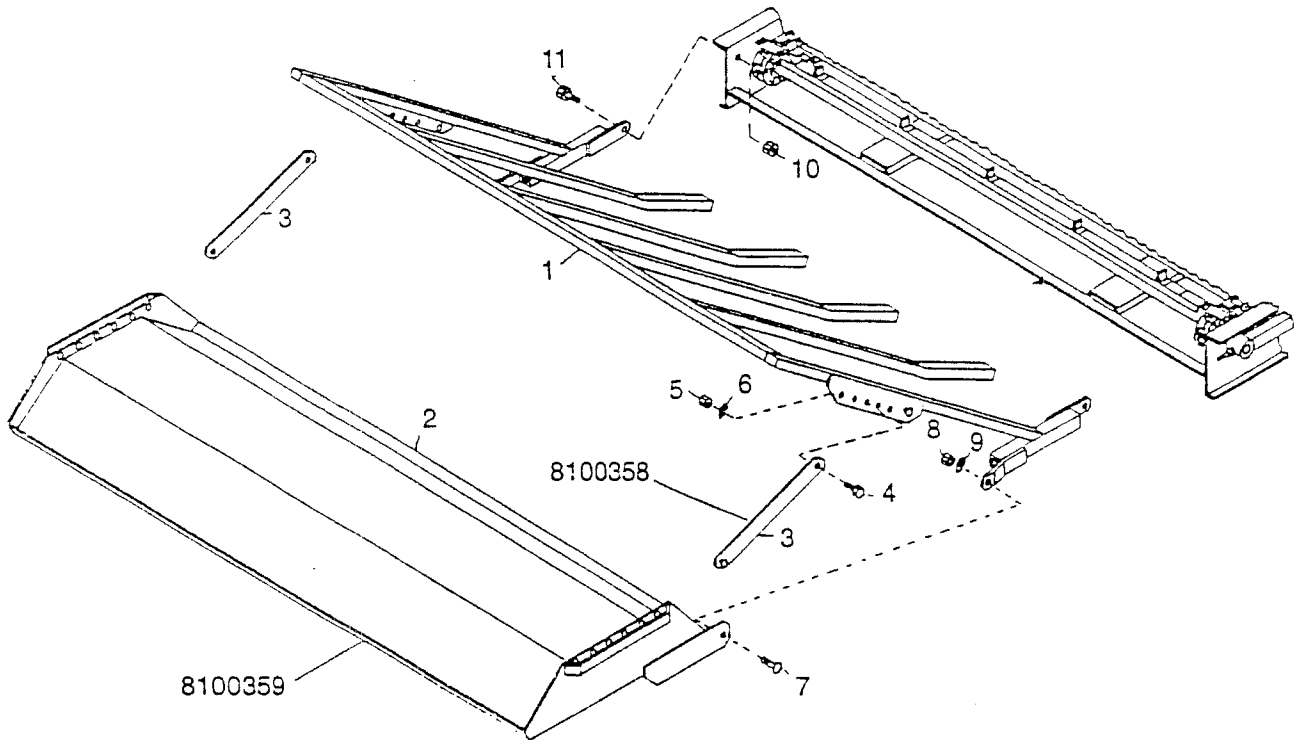
Ser. No. 101 thru 1496



ITEM	PART NO.	QTY.	DESCRIPTION
1	8100077	1	Rack
2	8100078	1	Deflector - SN 101 to 1496
3	8100079	2	Adjusting Link
4	4800003	4	3/8" x 1" Hex Head Bolt
5	4900002	4	3/8" Hex Nut
6	5000019	4	3/8" Lock Washer
7	4800082	2	1/2" x 1-1/2" Hex Head Bolt
8	4900001	2	1/2" Hex Nut
9	5000006	2	1/2" Lock Washer
10	4900014	2	1/2" Self Locking Hex Nut
3A	89100353	2	Adjusting Link for Deflector 881000357
2A	8100359	1	Deflector SN 1497-2449

RACK AND DEFLECTOR ASSEMBLY 37

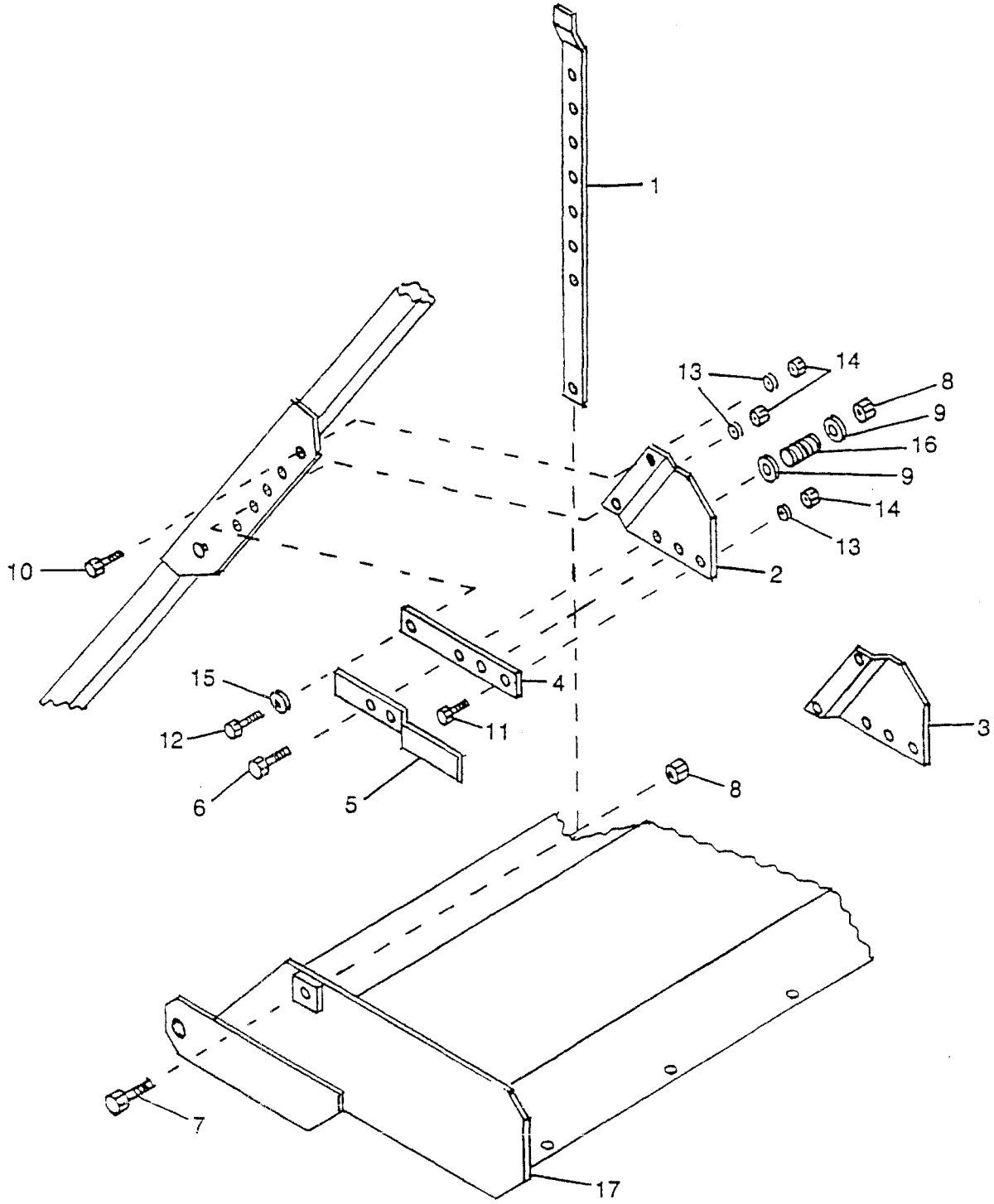
Ser. No. 1497 to 2449



ITEM	PART NO.	QTY.	DESCRIPTION
1	8100077	1	Rack
2	8100359	1	Deflector SN 1497 to 2449
3	8100358	2	Adjusting Link
4	4800003	2	3/8" x 1" Hex Head Bolt
5	4900002	2	3/8" Hex Nut
6	5000019	2	3/8" Lock Washer
7	4800061	2	1/2" x 1-1/2" Carriage Bolt
8	4900001	2	1/2" Hex Nut
9	5000006	2	1/2" Lock Washer
10	4900014	2	1/2" Self Locking Hex Nut
11	4800082	2	1/2" x 1-1/2" Hex Head Bolt

38 SPRING LOADED DEFLECTOR ADJUSTMENT

Ser. No. 2450 thru 4057



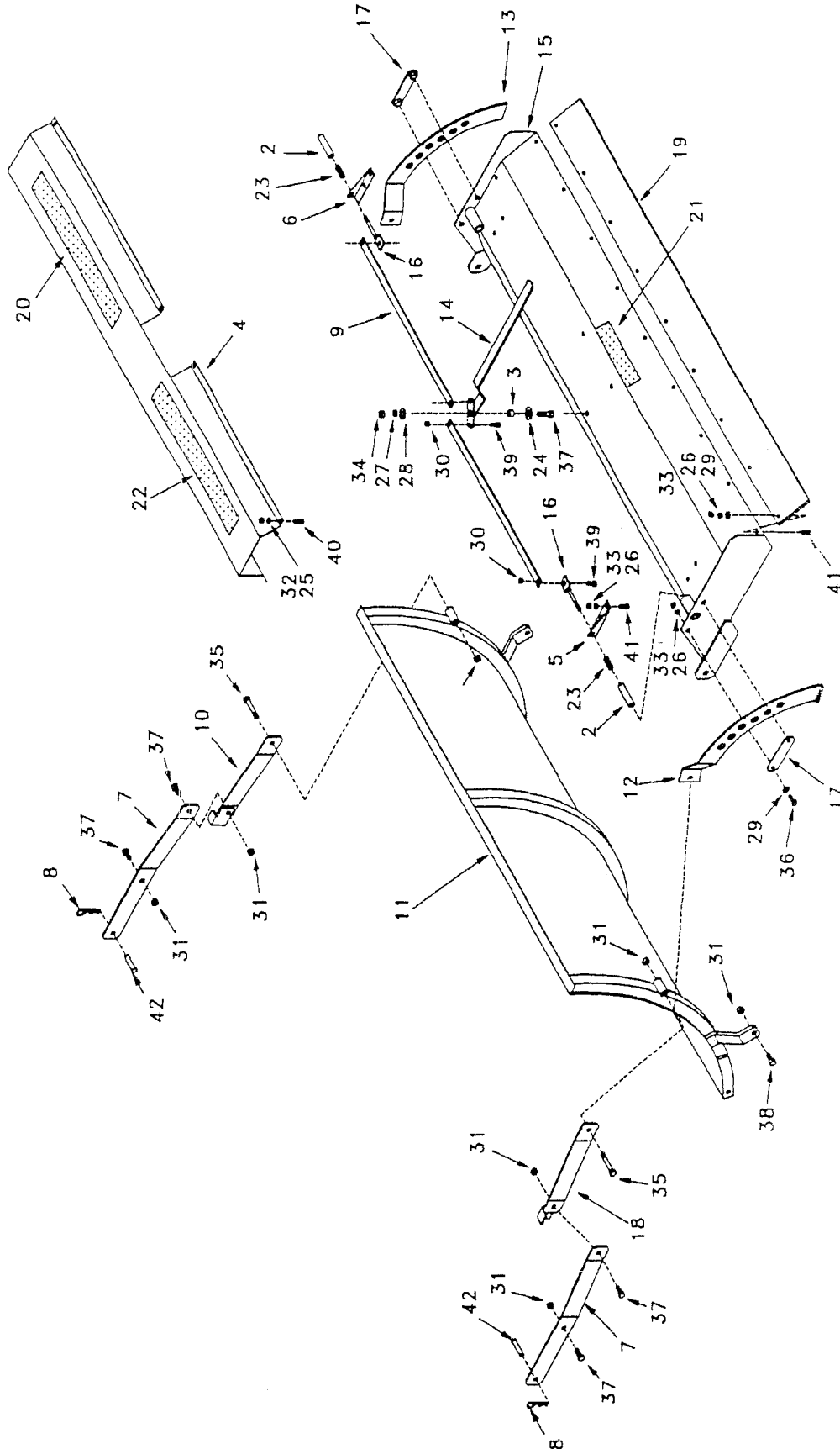
SPRING LOADED DEFLECTOR ADJUSTMENT 39

Ser. No. 2450 thru 4057

ITEM	PART NO.	QTY.	DESCRIPTION
1	8100212	2	Adjusting Strap
2	8100213	1	Mounting Plate Front
3	8100214	1	Mounting Plate Rear
4	8100215	1	Strap Retainer
5	8100216	2	Latch Handle
6	4800135	2	1/2" x 3-1/2" Bolt
7	4800082	2	1/2" x 1-1/2" Bolt
8	4900014	4	1/2" Lock Nut
9	5000016	4	7/16" Flat Washer
10	4800003	2	3/8" x 1" Bolt
11	4800098	2	3/8" x 1-1/4" Bolt
12	4800142	2	3/8" x 1-3/4" Bolt
13	5000019	6	3/8" Lock Washer
14	4900002	6	3/8" Nut
15	5000001	2	3/8" Flat Washer
16	6100002	2	Spring
17	8100217	1	Deflector S/N 2450 thru

40 RACK AND DEFLECTOR ASSEMBLY

Ser. No. 4058 thru



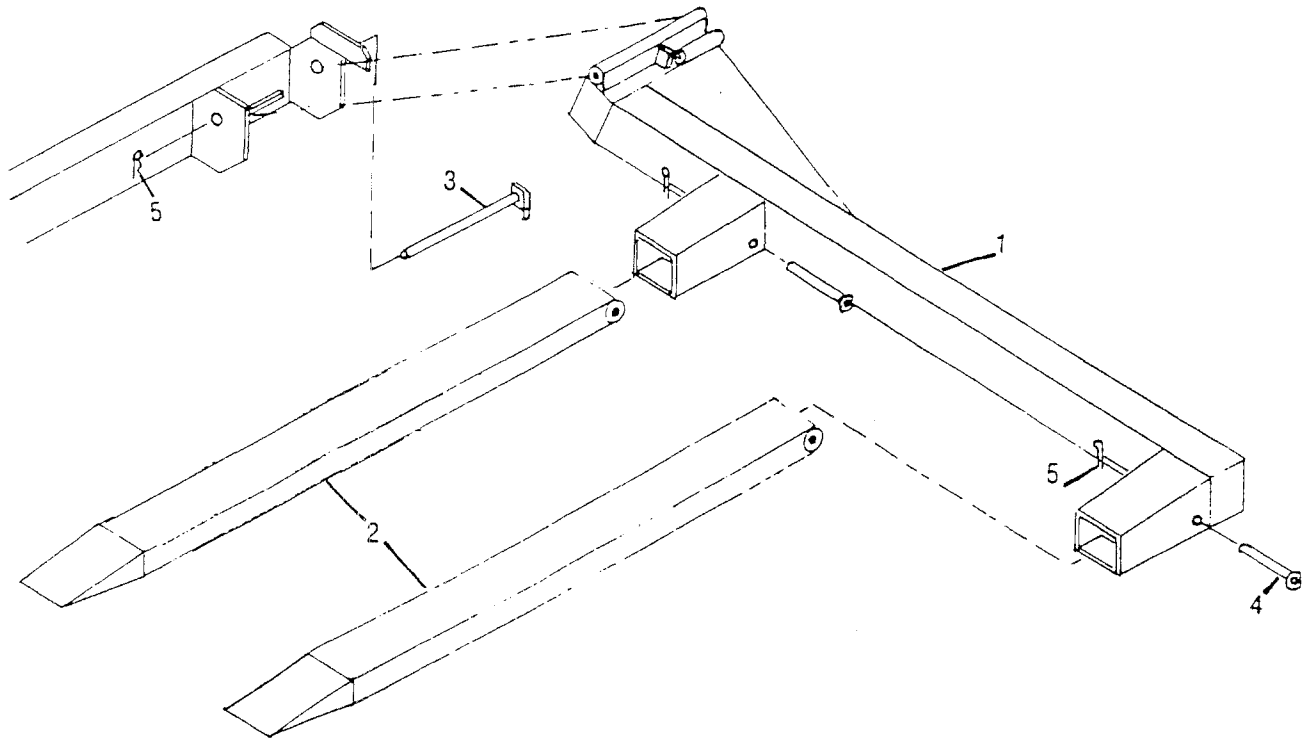
RACK AND DEFLECTOR ASSEMBLY 41

Ser. No. 4058 thru

ITEM	PART NO.	QTY.	DESCRIPTION
1	8100518		Rack/Deflector/Assy
2	8100471	2	Pin/Latch/Deflector/256
3	8100470	1	Bushing/Latch/256
4	8100469	1	Cover/Latch/Deflector/256
5	8100468	1	Guide LH/Latch/256
6	8100467	1	Guide RH/Latch/256
7	8100519	1	Strap/Rear/Rack
8	8100107	2	Pin/Hair/1/8 (#9)
9	8100455	2	Link/Latch/Deflector/256
10	8100442	1	Strap/Weld/Rear/256+II
11	8100450	1	Rack/Curved/256
12	8100448	1	Adj Link/RH/Deflector/256
13	8100447	1	Adj Link/LH/Deflector/256
14	8100446	1	Latch Han/Deflector/256
15	8100445	1	Deflector/CL Latch/256
16	8100444	2	Eye Bolt/Deflector/256
17	8100443	2	Latch Mount/Deflector/256
18	8100441	1	Strap Weld/Front/256
19	8100202	1	Belting/6x70
20	6500109	1	256 Plus II Decal
21	6500034	1	Danger Flyg Hay. Rack Decal
22	6500020	1	Haybuster Decal/Sunburst
23	6100002	2	Spring/.072 x.687 odx2-1/8
24	5000033	1	Washer/1-5/16ODx13/16ID
25	5000022	8	Washer/Lock/5/16
26	5000019	17	Washer/Lock/3/8
27	5000006	1	Washer/Lock/1/2
28	5000004	1	Washer/Flat/1/2
29	5000001	13	Washer/Flat/1/2
30	4900023	4	Nut/Toplock/3/8
31	4900014	8	Nut/Toplock/1/2
32	4900003	8	Nut/Hex/5/16
33	4900002	17	Nut/Hex/3/8
34	4900001	1	Nut/Hex/1/2
35	4800135	2	Bolt/Hex/1/2x3-1/2
36	4800098	4	Bolt/Hex/3/8x1-1/4
37	4800082	5	Bolt/Hex/1/2x1-1/2
38	4800061	2	Bolt/Crg/1/2x1-1/2
39	4800053	4	Bolt/Crg/3/8x1
40	4800008	8	Bolt/Hex/5/16x7/8
41	4800003	17	Bolt/Hex/3/8x1
42	4800030	2	Pin/Clevis/5/8x2

42 TINES AND TINE FRAME ASSEMBLY

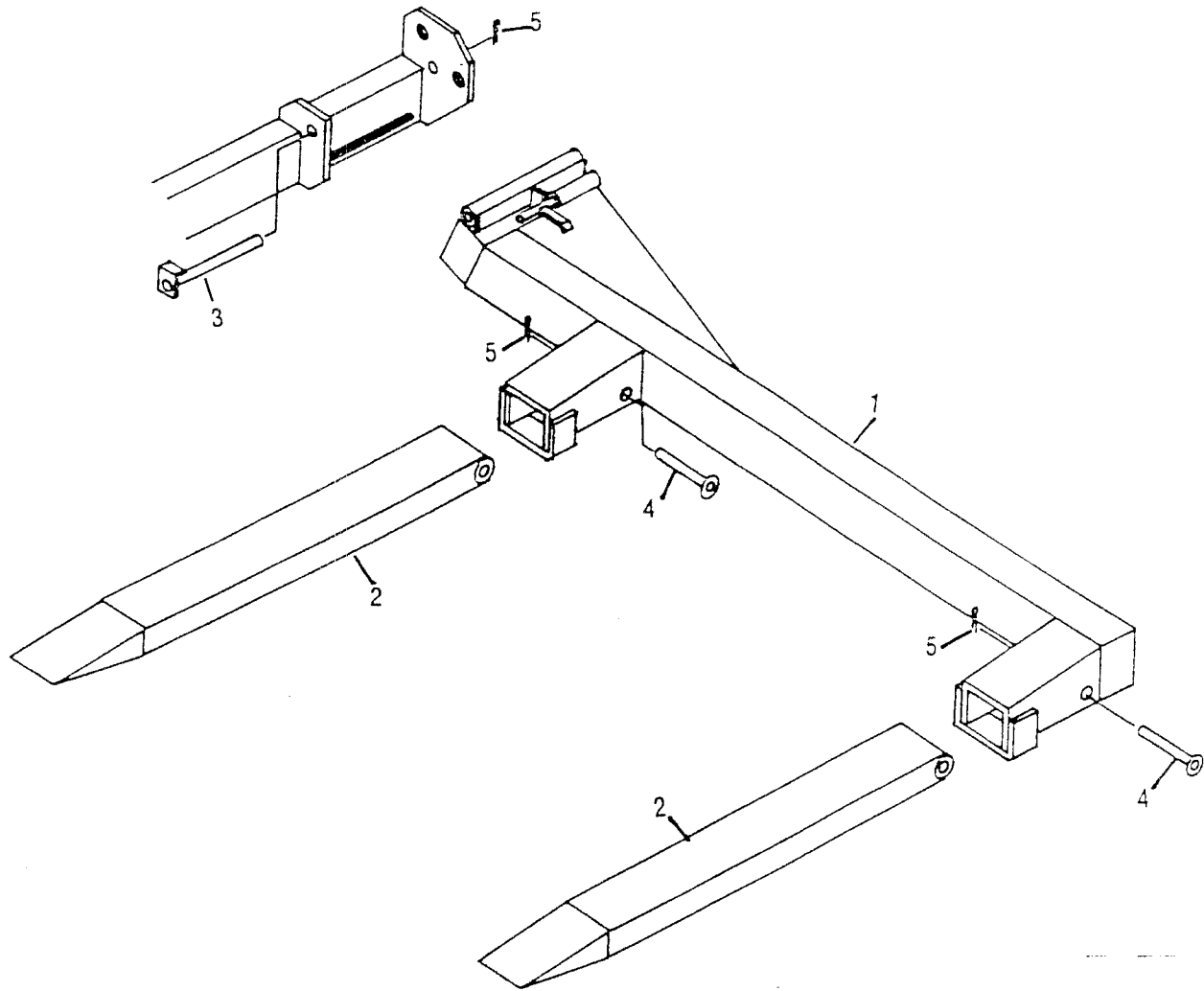
Ser. No. 101 to 950



ITEM	PART NO.	QTY.	DESCRIPTION
1	8100042	1	Tine Frame
2	8100043	2	Tine
3	8100044	1	Hinge Pin
4	8100045	2	Anchor Pin
5	4800103	3	1/4" x 2" Cotter Key

TINES AND TINE FRAME ASSEMBLY 43

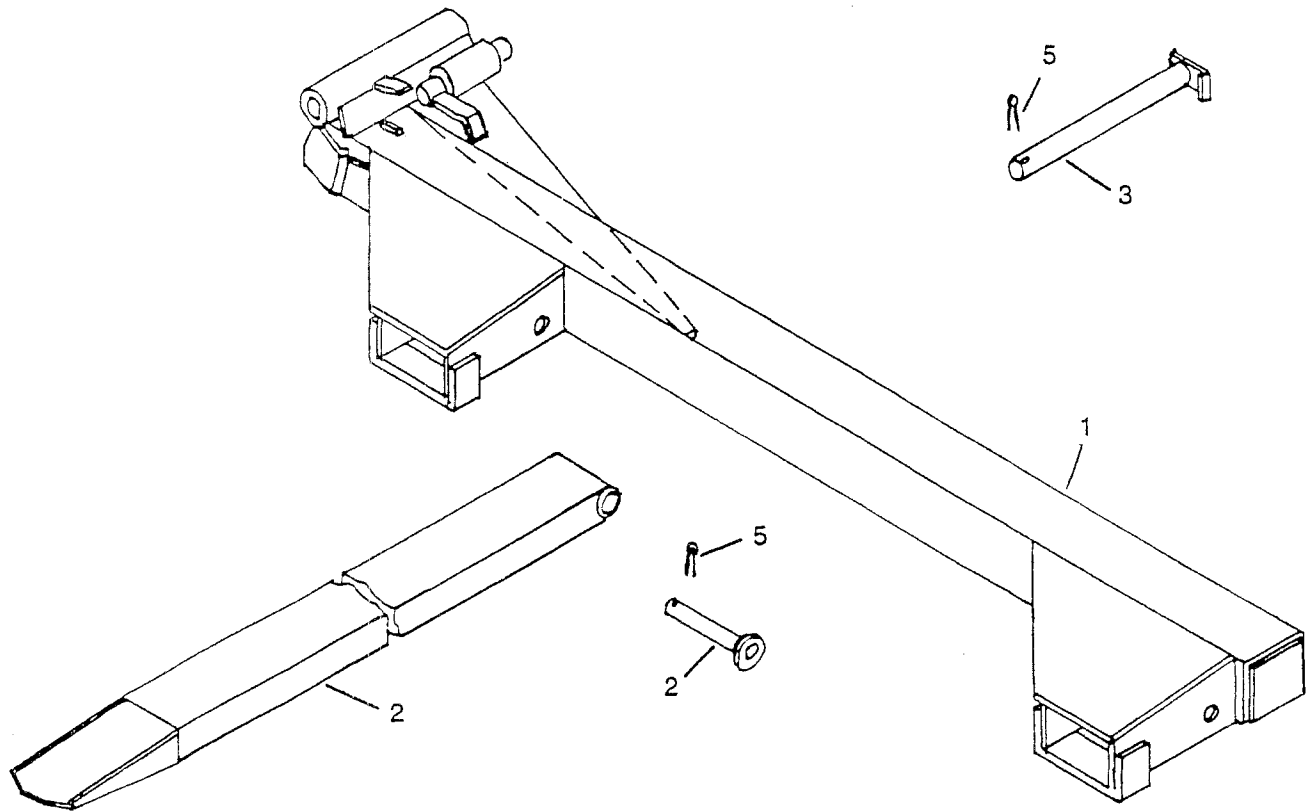
Ser. No. 951 thru 3597



ITEM	PART NO.	QTY.	DESCRIPTION
1	8100119	1	Tine Frame
2	8100043	2	Tine
3	8100044	1	Hinge Pin
4	8100045	2	Anchor Pin
5	4800103	3	1/4" x 2" Cotter Key

44 TINES AND TINE FRAME ASSEMBLY

Ser. No. 3598 thru

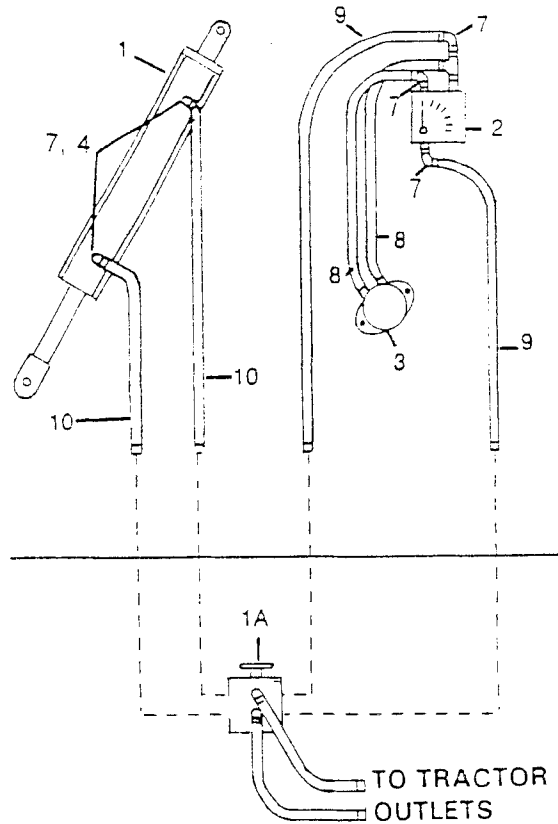


ITEM	PART NO.	QTY.	DESCRIPTION
1	8100421	1	Tine Frame
2	8100043	2	Tine
3	8100044	1	Hinge Pin
4	8100243	2	Anchor Pin
5	4800103	3	1/4" x 2" Cotter Key

HYDRAULICS PARTS LIST 45

Ser. No. 101 thru

DUAL HYDRAULIC HOOK-UP



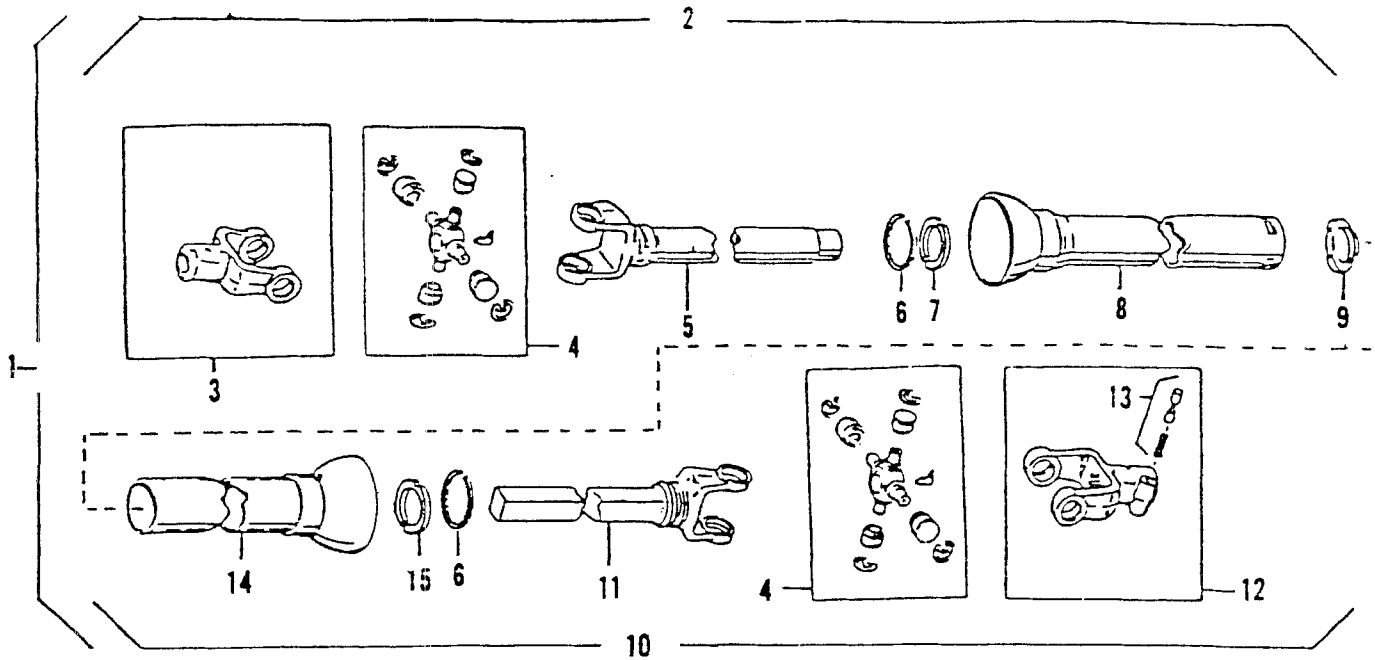
CONVERSION TO SINGLE HYDRAULIC HOOK-UP

(Dual Hydraulic Hook-Up)

ITEM	PART NO.	QTY.	DESCRIPTION
1	4100027	1	Hydraulic Cylinder 3-1/2" x 16"
2	3800036	1	Flow Control Valve
3	3900003	1	Hydraulic Motor
4	3800097	2	1/2" x 1/16" Restrictor Bushing
5	3800009	1	1/2" Tee
6	3800045	1	1/2" x 2" Closed Nipple
7	3800008	5	1/2" Elbow, 90° St.
8	3700018	2	1/2" Hose, 18" Long
9	3700181	2	1/2" Hose, 86" Long
10	3700061	2	1/2" Hose, 66" Long
Conversion to Single Hydraulic Hook-up			
1A	4000024	1	Selector Valve

46 P.T.O. ASSEMBLY PARTS LIST

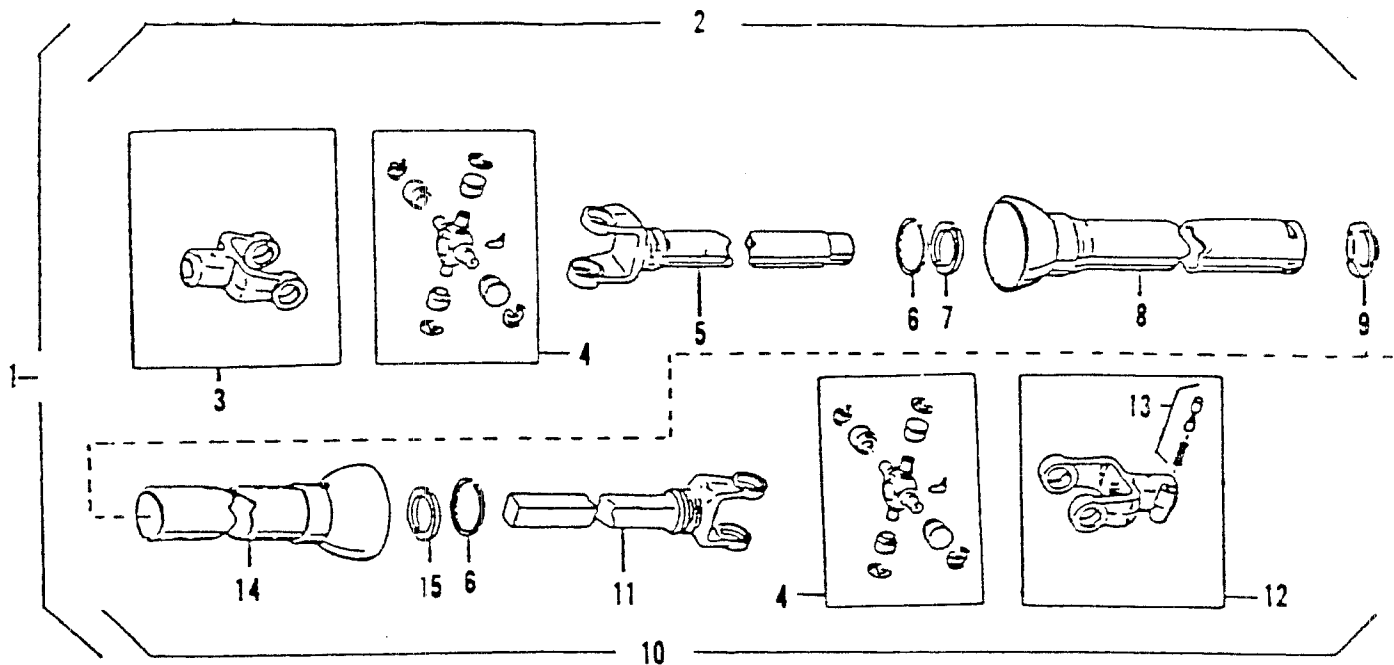
Ser. No. 101 to 950



ITEM	PART NO.	QTY.	DESCRIPTION
1	3600077	1	35RW Universal Joint and Telescoping Shaft Assembly with Guard
2	3600078	1	Joint and Tube with Guard Machine 1/2 Complete
3	3600079	1	Yoke, 1-3/4" Rd.
4	3600042	2	Repair Kit
5	3600080	1	Yoke and Tube
6	3600047	2	Bearing Retainer
7	3600052	1	Nylon Bearing
8	3600081	1	Male Guard Tube, Inner
9	3600049	1	Nylon Centralizer
10	3600082	1	Joint and Shaft Half with Guard, Tractor Complete
11	3600083	1	Yoke and Shaft
12	3600084	1	O.D. Yoke Assembly, 1000 RPM
13	3600056	1	Saf-T-Pin and Spring Kit
14	3600085	1	Female Guard Tube
15	3600048	1	Nylon Bearing

WEASLER MFG. - P.T.O. ASSEMBLY PARTS LIST 47

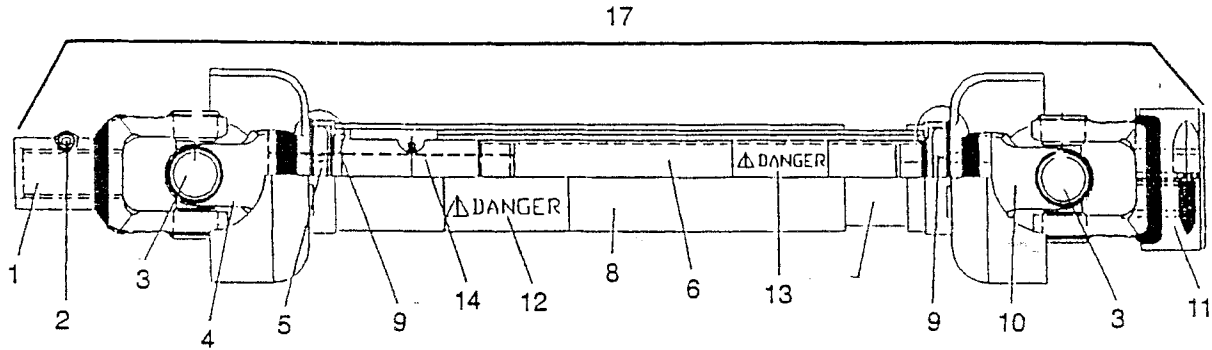
Ser. No. 951 thru



ITEM	PART NO.	QTY.	DESCRIPTION
1	3600107	1	35RW Universal Joint and Telescoping Shaft Assembly with Guard
2	3600108	1	Joint and Tube with Guard Machine 1/2 Complete
3	3600079	1	Yoke, 1-3/4" Rd.
4	3600042	2	Repair Kit
5	3600109	1	Yoke and Tube
6	3600047	2	Bearing Retainer
7	3600052	1	Nylon Bearing
8	3600110	1	Male Guard Tube, Inner
9	3600049	1	Nylon Centralizer
10	3600111	1	Joint and Shaft Half with Guard, Tractor Complete
11	3600112	1	Yoke and Shaft
12	3600084	1	O.D. Yoke Assembly, 1000 RPM
13	3600056	1	Saf-T-Pin and Spring Kit
14	3600113	1	Female Guard Tube
15	3600048	1	Nylon Bearing

48 P.T.O. ASSEMBLY PARTS LIST - G AND G MFG.

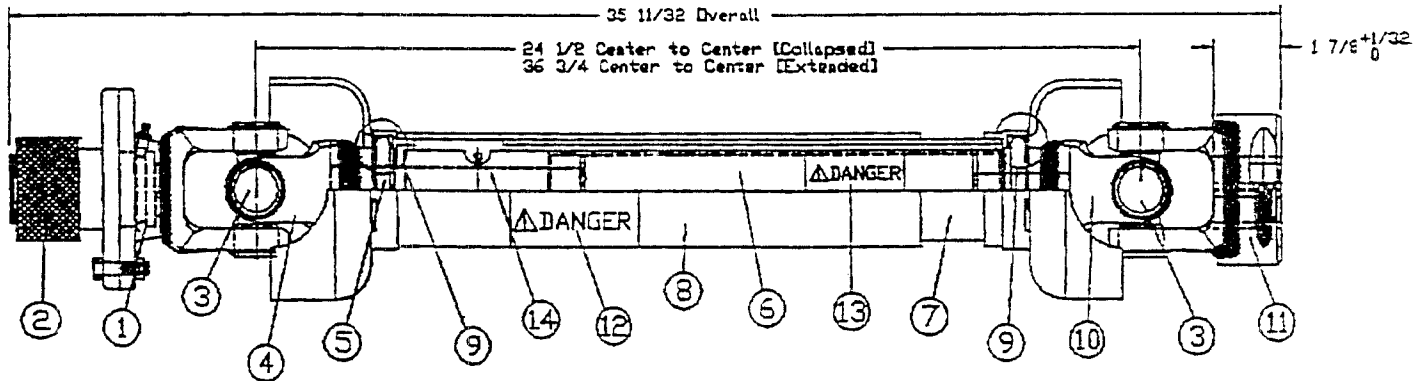
Ser. No. 3566 thru 4057



ITEM	PART NO.	QTY.	DESCRIPTION
1	3600227	1	1-3/8" x 21" Spline Snap Hitch Yoke
2	3600230	1	1-3/8" x 21" Spline Snap Hitch Pin Kit
3	3600231	1	P.T.O. Repair Kit
4	3600232	1	Bar Weld Yoke for 1-3/16" Square Shaft
5		1	1-3/16" Sq. Shafting w/3/16" Hole Shaft Length 20-1/2"
6		1	Torque Tubing 2-1/8" O.D. x 1-7/8" I.D. Tube Length 12-5/8"
7	3600233	1	2-11/16" Rd. Inner Plastic Shield w/Small Notched Bell 13-13/16" Long
8	3600234	1	3" Rd. Outer Plastic Shield w/Small Notched Bell 14-1/2" Long
9	3600235	1	Bearing Shield Kit (Nylon Brg., Snap Ring & Thrust Washer)
10	3600236	1	Torque Tube Weldment
11	3600237	1	1-3/4" Rd. Bore Clamp Yoke w/3/8"x3/16" Keyway & 3/8"x16" Set Screw
12		1	Danger Warning Label for Outside Shield
13		1	Danger Warning Label for Inside
14		1	1-3/16" Square Slip Sleeve
15	3600228	1	Machine Half
16	3600229	1	Tractor Half
17	36090238	1	P.T.O. Shaft Complete

P.T.O. ASSEMBLY PARTS LIST - G AND G MFG. 49

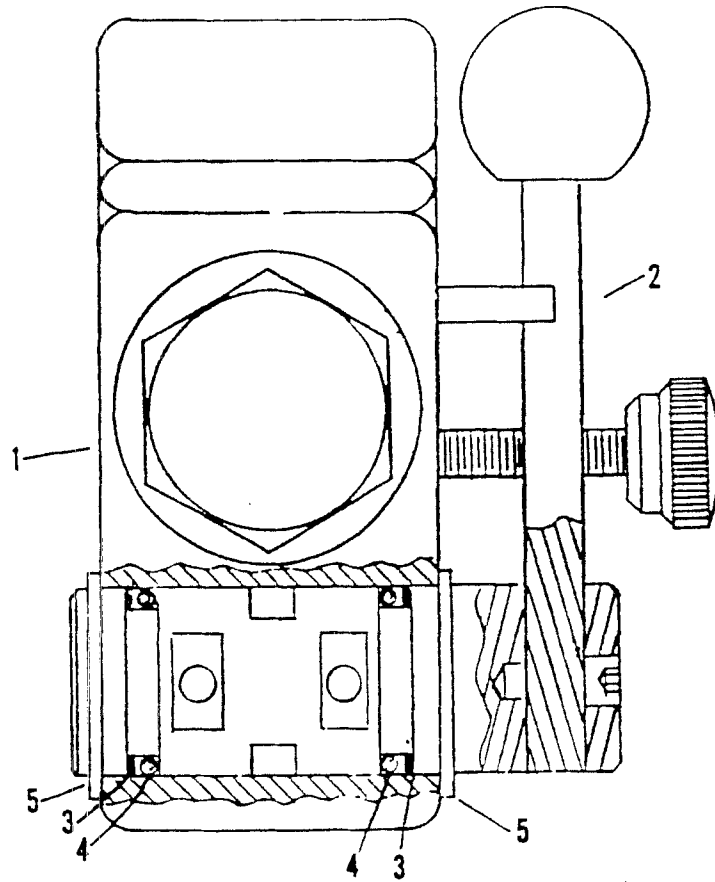
Ser. No. 4058 thru



ITEM	PART NO.	QTY.	DESCRIPTION
1	3600318	1	Shear Yoke, 3/8" Grade 2 Bolt
2	3600319	1	495 Spline Kit
3	3600231	1	PTO Repair Kit
4	3600232	1	Bar Weld Yoke for 1-3/16" Sq. Shaft
5	3600321	1	1-3/16 Sq. Shafting
6	3600322	1	Torque Tube, 2-1/8" OD, 1-7/8" ID, Length 12-5/8"
7	3600233	1	2-11/16 Inner Shield w/Small Notched Bell
8	3600234	1	3" Outer Shield w/Small Notched Bell
9	3600235	1	Bearing Shield Kit
10	3600236	1	Torque Tube Yoke
11	3600237	1	1-3/4 Round Bore Yoke
12	6500263	1	Warning Label for Outside Shield
13	6500264	1	Warning Label for Inside Shield
14	3600320	1	1-3/16 Sq. Slip Sleeve
15	3600323	1	PTO Shaft Complete

50 FLOW CONTROL VALVE

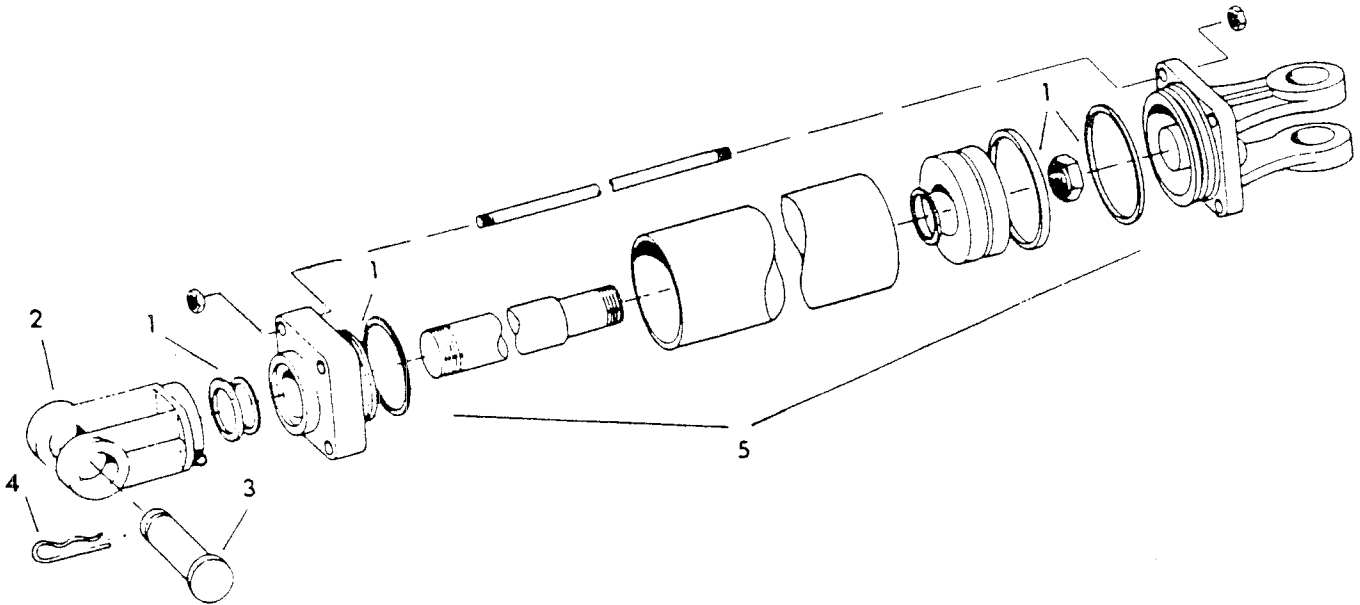
Ser. No. 101 thru



ITEM	PART NO.	QTY.	DESCRIPTION
1	3800036	1	Flow Control Valve
2	4000031	1	Handle Assembly
3	4000032	2	Backup Seal
4	4000033	2	O-Ring
5	4000034	2	Snap Ring

HYDRAULIC CYLINDER 51

Ser. No. 101 thru



TIE ROD CYLINDER (SHOWN)

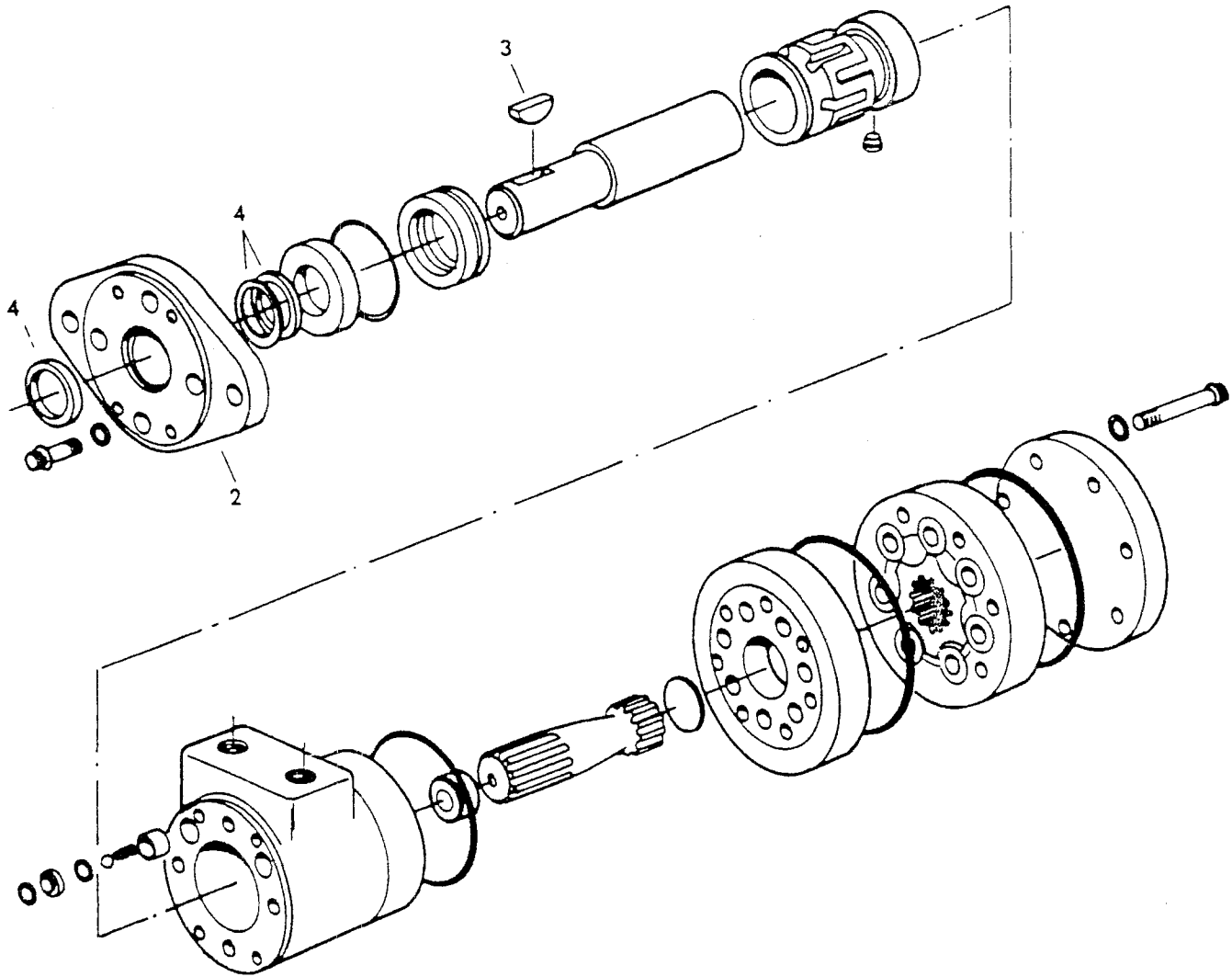
ITEM	PART NO.	QTY.	DESCRIPTION
1	4100028	1	Seal Kit
2	4100029	1	Yoke
3	4100030	2	Pin
4	4100031	2	Key
5	4100027	1	3-1/2" x 16" Cylinder Complete
6	4100061	1	Rod End Cap 1-1/2" Bore
7	4100054	1	Anchor End Cap
8	4100043	1	Rod 1-1/2"
9	4100063	1	Piston

WELDED CYLINDER (NOT SHOWN)

ITEM	PART NO.	QTY.	DESCRIPTION
1	4100172	1	Seal Kit
2	4100029	1	Yoke
3	4100030	2	Pin
4	4100031	2	Key
5	4100119	1	3-1/2"x16" Cylinder Complete (Welded)
6	4100173	1	Rod End Cap 1-1/2" Bore
7	4100043	1	Rod 1-1/2"
8	410063	1	Piston

52 ORBIT MOTOR

Ser. No. 101 thru



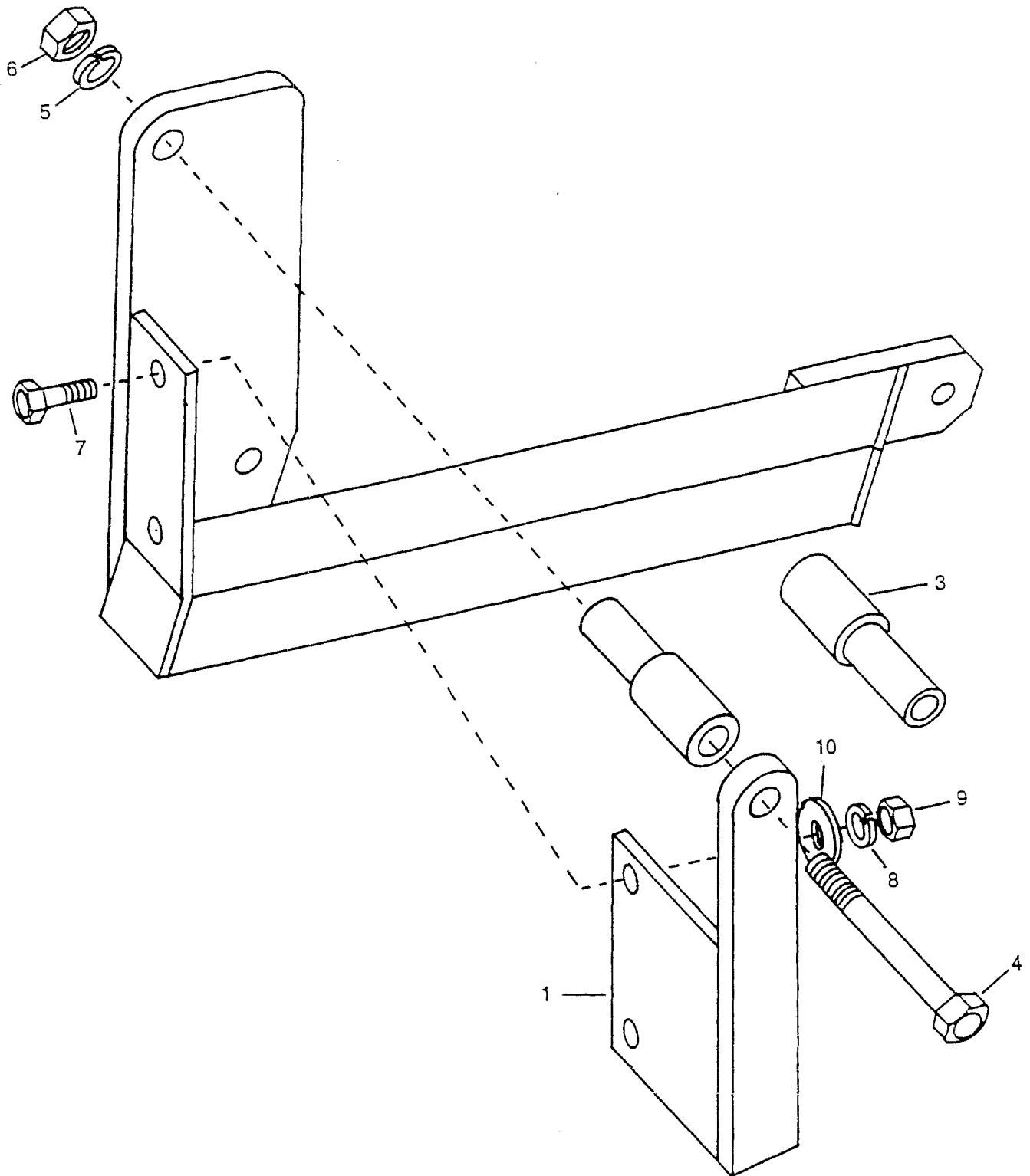
ITEM	PART NO.	QTY.	DESCRIPTION
2	3900002	1	Mounting Flange
3	6200003	1	Key, Woodruff
4	3200002	1	Seal Kit, Orbit
5	3900003	1	Orbit Motor Complete, 207
6	3900008	1	Orbit Motor Complete, 208 (Optional)

FOR SER. NO. 4058 THRU

4A	7501033	1	Seal Kit for 3900019 Motor
5A	3900019	1	Orbit Motor Complete, Dan Foss 151-2088

54 BALE BUSTER QUIK TATCH

Ser. No. 1151



BALE BUSTER QUIK TATCH 55

Ser. No. 1151

ITEM	PART NO.	QTY.	DESCRIPTION
1	8100129	1	Quick Hitch Mount, Left (shown)
2	8100130	1	Quick Hitch Mount, Right
3	8100131	2	Reversible Adapter Bushing
4	4800189	2	1-1/8" x 9" Grade 5 Hex Bolt
5	5000025	2	1-1/8" Lock Washer
6	4900037	2	1-1/8" Hex Nut
7	4800010	4	5/8" x 2" Hex Bolt
8	5000003	4	5/8" Lock Washer
9	4900005	4	5/8" Hex Nut
10	5000002	4	5/8" Flat Washer

HAYBUSTER ¹ **BIG** BALEBUSTER ²


3



WARNING
NO RIDERS
SERIOUS PERSONAL INJURY COULD RESULT FROM RIDING ON THE MACHINE

4

! DANGER



ROTATING DRIVELINE
CONTACT CAN CAUSE DEATH
KEEP AWAY!

DO NOT OPERATE WITHOUT —

- ALL DRIVELINE, TRACTOR AND EQUIPMENT SHIELDS IN PLACE
- DRIVELINES SECURELY ATTACHED AT BOTH ENDS
- DRIVELINE SHIELDS THAT TURN FREELY ON DRIVELINE

5

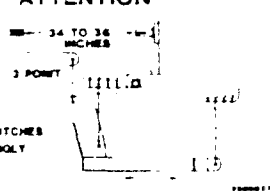
! WARNING

STAY CLEAR OF OUTRIGGERS
FAILURE TO USE CAUTION COULD RESULT IN SERIOUS INJURY OR DEATH

6

ATTENTION

1000 R.P.M. P.T.O. — 34 TO 36 INCHES — 3 POINT

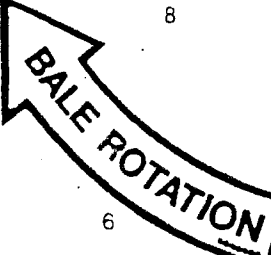


ADJUST HITCHES ACCORDINGLY

7

8

BALE ROTATION



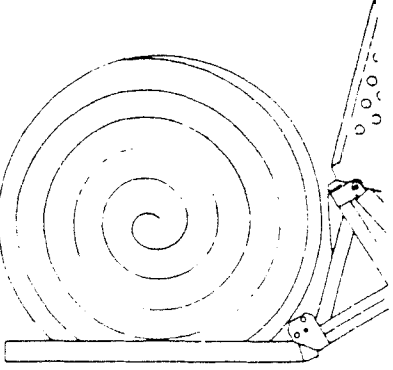
9

! WARNING FOR YOUR PROTECTION AND PROTECTION OF OTHERS, PRACTICE THE FOLLOWING SAFETY RULES.

1. BEFORE OPERATING THIS MACHINE, READ THE OPERATOR'S MANUALS SUPPLIED WITH THIS MACHINE AND YOUR TRACTOR.
2. CHECK OPERATOR'S MANUALS TO BE SURE YOUR TRACTOR MEETS THE MINIMUM REQUIREMENTS FOR THIS MACHINE.
3. READ ALL DECALS PLACED ON THIS MACHINE FOR YOUR SAFETY AND CONVENIENCE.
4. NEVER ALLOW RIDERS ON THIS IMPLEMENT OR THE TRACTOR.
5. KEEP OTHERS AWAY FROM THIS MACHINE WHILE IN OPERATION.
6. KEEP ALL SHIELDS IN PLACE WHILE MACHINE IS OPERATING.
7. KEEP HANDS, FEET, LOOSE CLOTHING, ETC., AWAY FROM POWER DRIVEN PARTS.
8. ALWAYS SHUT OFF MACHINE AND ENGINE BEFORE SERVICING, UNLOADING, INSPECTING, OR WORKING NEAR THIS MACHINE FOR ANY REASON. ALWAYS PLACE TRANSMISSION IN PARK OR SET PARK BRAKE AND WAIT FOR ALL MOVEMENT TO STOP BEFORE APPROACHING THIS MACHINE.

10

TO REDUCE HAY SPILLAGE



LOAD BALE WITH WRAPS AS SHOWN

6500074

11

KEEP WHEEL BOLTS TIGHT

12

! WARNING

FOR YOUR PROTECTION KEEP ALL SHIELDS IN PLACE AND SECURED WHILE MACHINE IS OPERATING. MOVING PARTS WITHIN CAN CAUSE SEVERE PERSONAL INJURY.

13

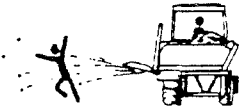
! DANGER

ROTATING FLAILS CAN KILL OR DISMEMBER

KEEP CLEAR OF MACHINE UNTIL POWER TAKE-OFF HAS BEEN DISENGAGED, TRACTOR ENGINE SHUT OFF AND FLAIL ROTATION STOPPED

14

! DANGER



FLYING HAY, ROCKS, AND OTHER OBJECTS THROWN BY MACHINE.

STAY CLEAR OF DISCHARGE SIDE OF MACHINE UNLESS OPERATOR HAS STOPPED TRACTOR ENGINE AND MACHINE HAS STOPPED ROTATING.

FAILURE TO FOLLOW THESE INSTRUCTIONS MAY RESULT IN SEVERE PERSONAL INJURY OR DEATH.

HAYBUSTER™

MANUFACTURED
BY

 **DURATECH**®

***256 2 POINT
BALEBUSTER***™

SERIAL NUMBER GI4298 AND UP

SUPPLEMENT

ADJUSTMENTS

ADJUSTING THE MACHINE

Changing distribution pattern

The deflector can be set to create a windrow or for spreading.

To change the setting, firmly grab the rubber belting or the outer edge of the deflector. With the other hand, grab the deflector latch handle. Turn the handle, which releases pins on either end of the deflector. Rotate the deflector to the desired position and release the handle.

A wider deflector belt is available to drop the material closer to the machine

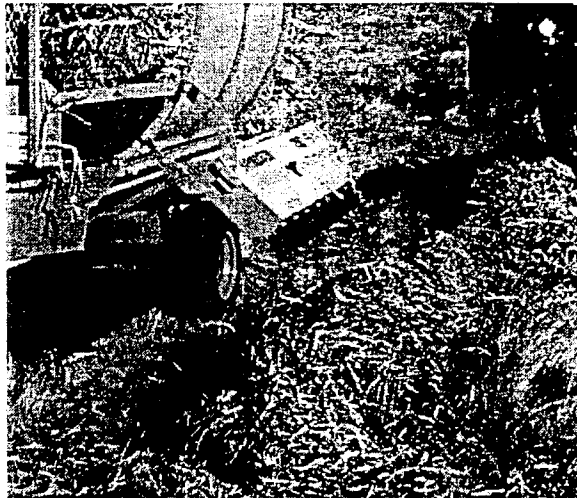


Figure 1, Deflector Set to Create a Windrow

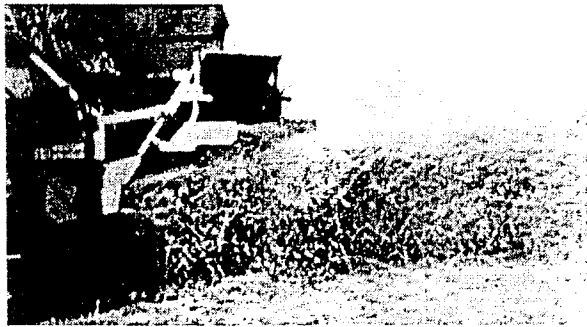


Figure 2, Deflector Set for Spreading



Figure 3, Adjusting the Deflector

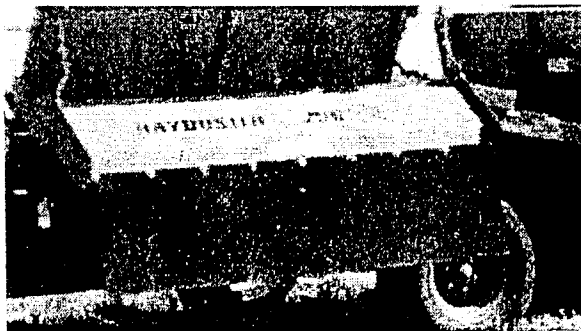


Figure 4, Wide Deflector Option

ADJUSTMENTS

Changing Length of cut

1. CHANGING STRIPPER PLATES.

Adding stripper plates will produce a finer cut and removing plates will produce a coarser cut (see Figure 5).

For a finer cut, one or two more stripper plates can be added. Space the added stripper plates 4" apart and drill five (5) 17/32" holes for each plate using the plate as a guide. Install the plate with five 1/2" x 1-1/2" bolts, flat washers, lock washers, and nuts.

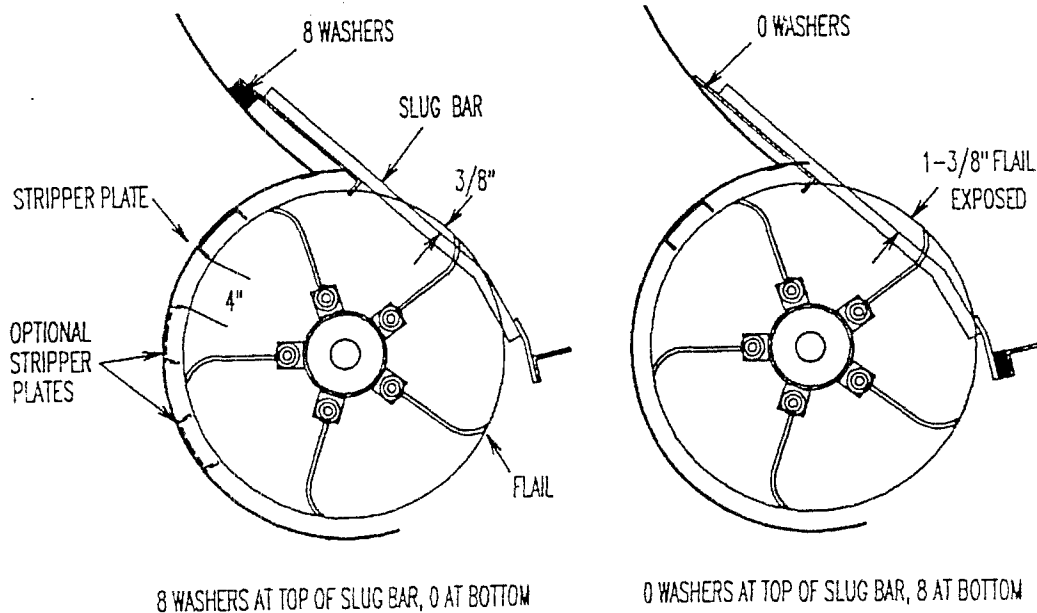
In applications such as land reclamation, where a very coarse cut is desired, the stripper plate may be removed.

2. CHANGING SLUG BAR.

Exposing less flail will create a finer cut, while exposing more flail will create a coarser cut.

This is accomplished by moving flat washers from one end of each bar to the other end.

No. Washers on Top	No. Washers on Bottom	Approx. Flail Exposed
0	8	1-3/8"
1	7	1-1/4"
2	6	1-1/8"
3	5	1"
4	4	7/8"
5	3	3/4"
6	2	5/8"
7	1	1/2"
8	0	3/8"



8 WASHERS AT TOP OF SLUG BAR, 0 AT BOTTOM

0 WASHERS AT TOP OF SLUG BAR, 8 AT BOTTOM

Figure 5, SLUG BAR AND STRIPPER PLATE ADJUSTMENTS

ADJUSTMENTS

3. ADJUST CONVEYOR SPEED

Moving the lever counterclockwise will slow the conveyor, and make a finer product.. Moving the lever clockwise will speed up the conveyor and make a coarser product.

For tractors with PFC type hydraulic systems: This valve should be set in the full open position. Conveyor speed can be controlled directly from the tractor controls.

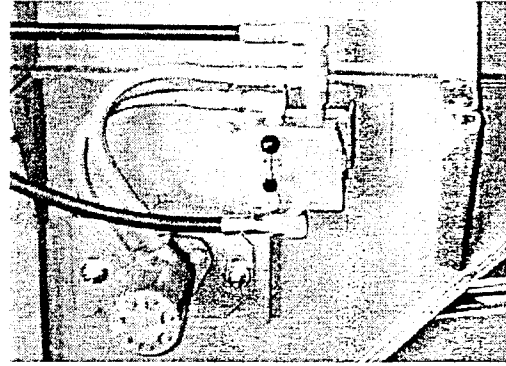
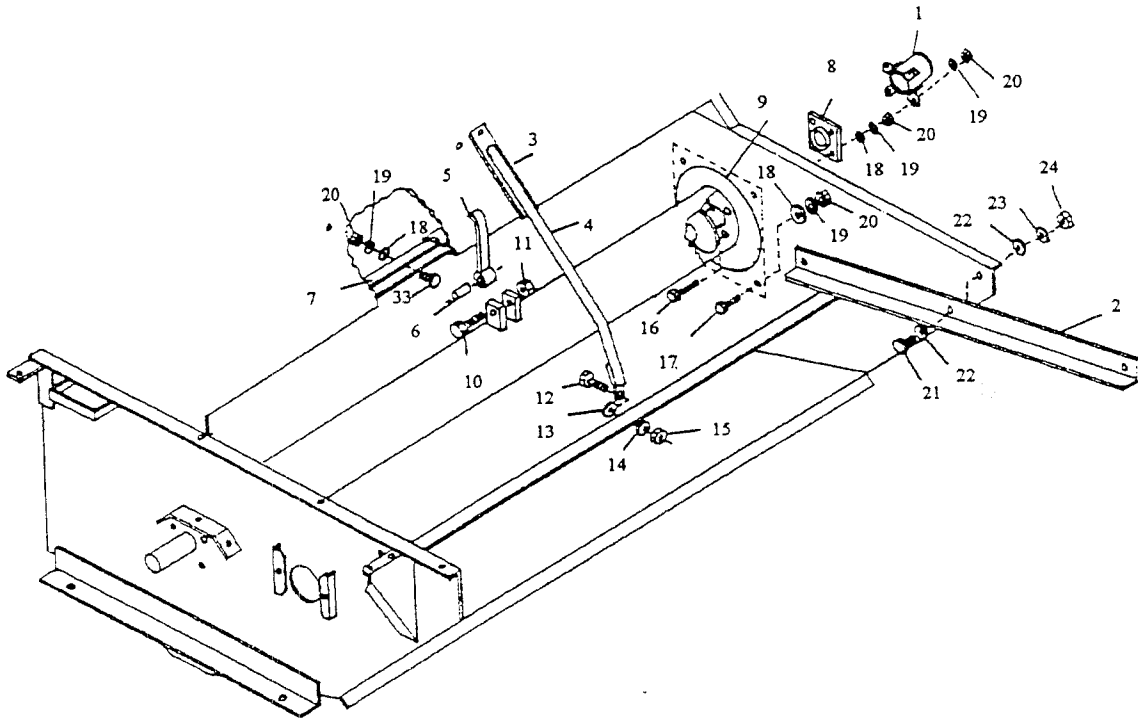


Figure 6, Conveyor Speed Control Valve

SHREDDER ASSEMBLY

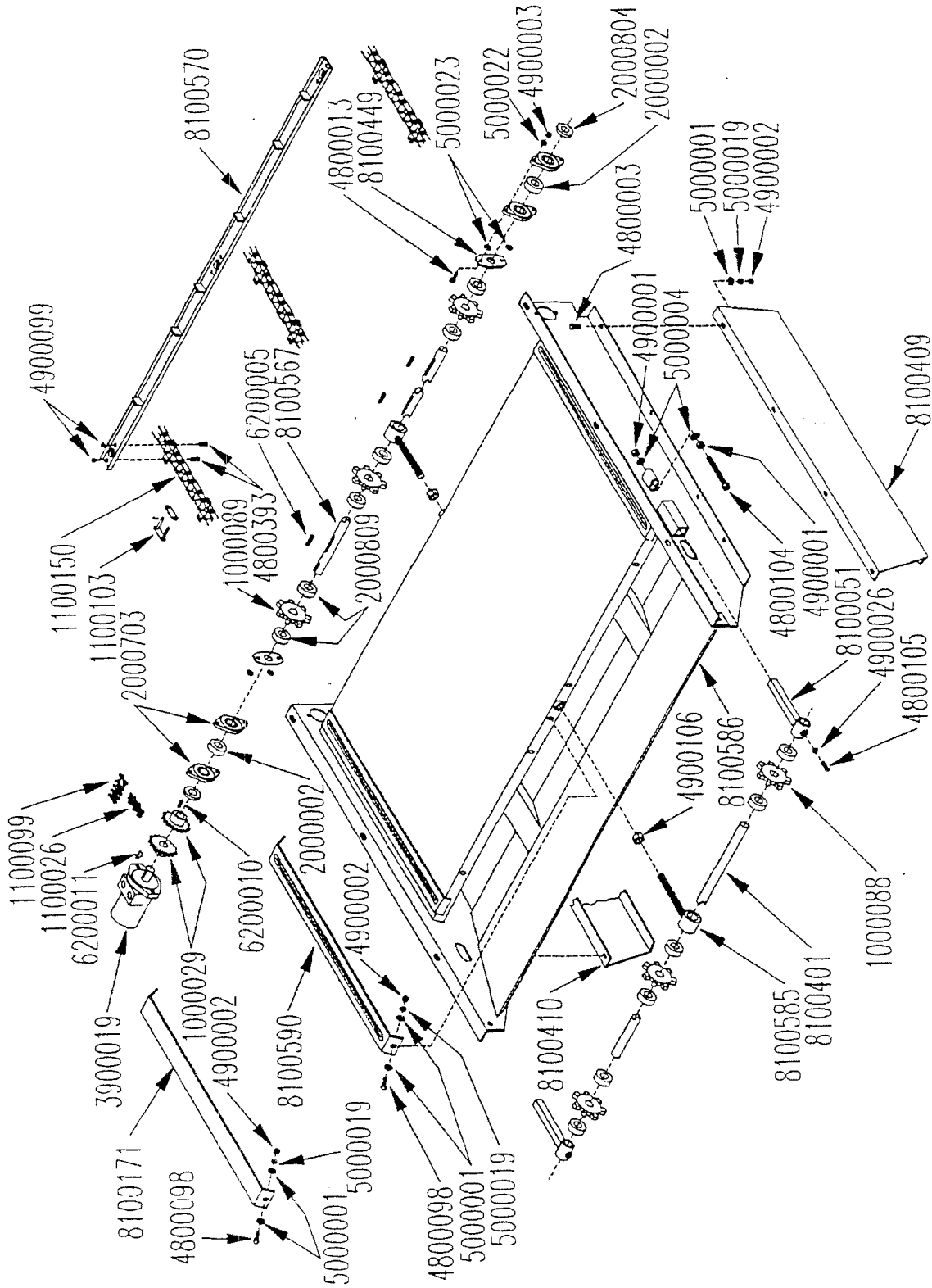


SHREDDER ASSEMBLY

<u>ITEM</u>	<u>PART NUMBER</u>	<u>QUANTITY</u>	<u>DESCRIPTION</u>
1	8100353	1	Rotor Shield
2	8100174	2	Wide Conveyor Mount
3	8100025	5	Slug Bar SN up to GI4297
3	8100579		Slug Bar w/2 bends SN GI4298 and up
4	8100437	1	Rotor
5	5200009	30	Flail
6	7500223	30	Flail Bushing
7	8100024	1	Stripper Plate
8	1900011	2	Bearing\4-Hole Flange\1-3/4
9	8100191	1	Rotor End Plate
10	4800100	30	Bolt\5/8x4\GR5
11	4900012	30	Nut\Lock\5/8
12	4800010	8	Bolt\5/8x2
13	5000002	22	Washer\Flat\5/8
14	5000003	9	Washer\Lock\5/8
15	4900005	9	Nut\5/8
16	4800070	4	Bolt\Hex\1/2x2-1/2
17	4800018	11	Bolt\Hex\1/2x1-1/4
18	5000004	15	Washer\Flat\1/2
19	5000006	15	Washer\Lock\1/2
20	4900001	15	Nut\1/2
21	4800098	6	Bolt\Hex\3/8x1-1/4
22	5000001	10	Washer\Flat\3/8
23	5000019	8	Washer\Lock\3/8
24	4900002	8	Nut\3/8
Not Shown	8100118		Slug Bar Weight, Optional
Not Shown	8100464	1	Belt\Shredder\12x35

BALE CONVEYOR ASSEMBLY

Serial Number GI4298 and up

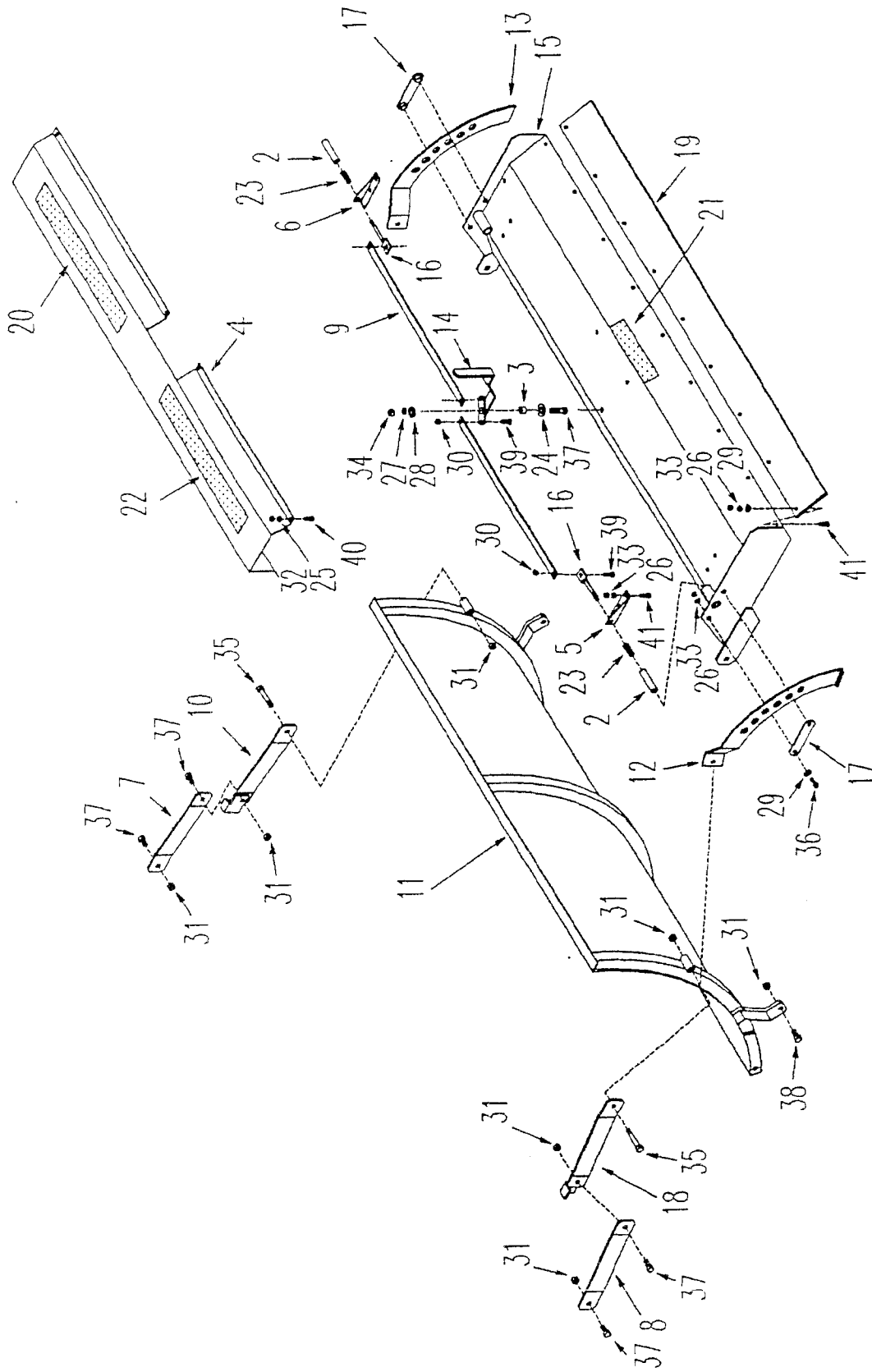


BALE CONVEYOR ASSEMBLY

Serial Number G14298 and up

<u>PART</u>	<u>QUANTITY</u>	<u>DESCRIPTION</u>
8100595		CNVYR\ASSY\3CH\256
1000029	2	SPKT\50\14\1\1\4KW\HR
1000088	3	SPKT\662\7\1\1\4KW\DR
1000089	3	SPKT\662\7\1\1\4KW\DR
1100026	1	CHAIN\50DBL\13
1100099	1	CHAIN\50DBL\CL
1100103	3	CHAIN\620CA\CL
1100150	3	CHAIN\620CA\44\W\ATTC
2000002	2	1" W\COLLAR
2000804	2	CLLR\ECC\LOCK\1
2000703	4	FLGETT\1\2BOLT\PLTD
2000804	2	CLLR\ECC\LOCK\1
2000809	12	CLLR\SHFT\1\SET
3900019	1	MTR\HYD\151-2088\DNF
4800003	8	BOLT\HEX\3\8X1
4800013	4	BOLT\HEX\5\16X1
4800098	10	BOLT\HEX\3\8X1-1\4\NC
4800104	2	BOLT\WELD\HEX\1\2X5\T
4800105	2	SCR\SET\ALN\3\8X1\NC
4800393	54	BOLT\HEX\5\16X7\8\GR8
4900001	4	NUT\HEX\1\2\NC
4900002	18	NUT\HEX\3\8\NC
4900003	4	NUT\HEX\5\16\NC
4900026	2	NUT\JAM\3\8\NC
4900099	54	NUT\TPLCK\5\16\GR8\NC
4900106	2	NUT\NYLCK\3\4\NC
5000001	28	WASH\FLAT\3\8
5000004	4	WASH\FLAT\1\2
5000019	18	WASH\LOCK\3\8
5000022	4	WASH\LOCK\5\16
5000023	4	WASH\FLAT\5\16
6200005	3	KEY\SQ\1\4X1-1\2
6200010	1	KEY\SQ\1\4X1
6200011	1	KEY\WDF\1\4X1\#15\808
8100051	2	TIGHTENER BRACKET
8100171	4	PLASTIC STRIP WIDE CO
8100401	1	IDLER SHAFT 1"X71 1/2
8100409	1	REAR\CONVEYOR SIDE EX
8100410	1	FRONT\CONVEYOR SIDE E
8100449	2	GUARD\TWINE\CNVYR\256
8100567	1	SHFT\DRV\3CH\CNVYR\25
8100570	9	SLAT\CNVYR\3CH\256
8100585	2	SUP\SHFT\DRIVE\CNVYR\
8100586	1	FRM\CNVYR\3CH\256II
8100590	1	PL\RUB\CHAIN\CNVYR

RACK/DEFLECTOR ASSEMBLY



RACK\DEFLECTOR ASSEMBLY

<u>ITEM</u>	<u>PART</u>	<u>QUANTITY</u>	<u>DESCRIPTION</u>
1	8100463		Rack\Deflector\Assy
2	8100471	2	Pin\Latch\Deflector\256
3	8100470	1	Bushing\Latch\256
4	8100469	1	Cover\Latch\Deflector\256
5	8100468	1	Guide LH\Latch\256
6	8100467	1	Guide RH\Latch\256
7	8100466	1	Strap\Rear\256
8	8100465	1	Strap\Front\256
9	8100455	2	Link\Latch\Deflector\256
10	8100451	1	Strap\Weld\Rear\256+II
11	8100450	1	Rack\Curved\256
12	8100448	1	Adj Link\RH\Deflector\256 Ser.No.up to G14297
12	8100593	1	Adj Link\RH\Deflector\256 Ser.No. G14298 and up
13	8100447	1	Adj Link\LH\Deflector\256 Ser.No.up to G14297
13	8100592	1	Adj Link\LH\Deflector\256 Ser.No. G14298 and up
14	8100604	1	Latch Han\Deflector\256
15	8100445	1	Deflector\CL Latch\256
16	8100444	2	Eye Bolt\Deflector\256
17	8100443	2	Latch Mount\Deflector\256
18	8100441	1	Strap Weld\Front\256
19	8100202	1	Belting\6x70
19	8100420	1	Belting\18X69-3/4(optional)
20	6500109	1	256 Plus II Decal
21	6500034	1	Danger Flyg Hay. Rack Decal
22	6500020	1	Haybuster Decal\Sunburst
23	6100002	2	Spring\.072x.687odx2-1/8
24	5000033	1	Washer\1-5/16ODx13/16ID
25	5000022	8	Washer\Lock\5/16
26	5000019	17	Washer\Lock\3/8
27	5000006	1	Washer\lock\1/2
28	5000004	1	Washer\Flat\1/2
29	5000001	13	Washer\Flat\1/2
30	4900023	4	Nut\Toplock\3/8
31	4900014	8	Nut\Toplock\1/2
32	4900003	8	Nut\Hex\5/16
33	4900002	17	Nut\Hex\3/8
34	4900001	1	Nut\Hex\1/2
35	4800135	2	Bolt\Hex\1/2x3-1/2
36	4800098	4	Bolt\Hex\3/8x1-1/4
37	4800082	5	Bolt\Hex\1/2x1-1/2
38	4800061	2	Bolt\Crg\1/2x1-1/2
39	4800053	4	Boit\Crg\3/8x1
40	4800008	8	Bolt\Hex\5/16x7/8
41	4800003	17	Bolt\Hex\3/8x1
	8100578		Kit\Assembly\Deflector